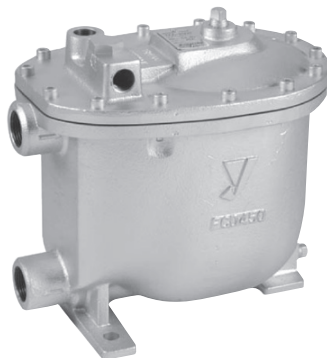


TFA-2000



■Features

1. Float trap equipped with pump assist function.
2. Most appropriate for discharge of low pressure condensate at air-conditioning unit or heating unit.

- Intended purpose is as follows:
 - Air-conditioning at clean room
 - Drying machine for gravure printing
 - Drying machine for film processing

■Specifications

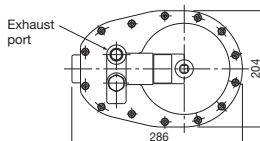
Nominal size	25A	
Application	Steam condensate, Non-hazardous fluid	
Motive fluid	Steam / Air	
Max. working pressure	0.5 MPa	
Motive pressure	0.03 to 0.5 MPa	
Motive differential pressure	(Back pressure + 0.03 MPa) to 0.5 MPa	
Max. working temperature	160°C	
Material	Body	Ductile cast iron (FCD450)
	Trim parts	Stainless steel
	Float (F)	Stainless steel
Connection	JIS Rc screwed	
Check valve at inlet side	Built-in (swing type)	
Check valve at outlet side	Externally attached *	

* Install an optional check valve (SCV-2 or SCV-3) 25A on outlet side of the product.

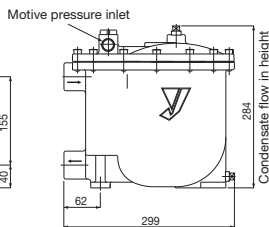
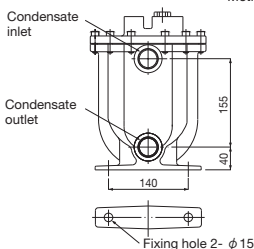
■Dimensions (mm) and Weights (kg)

<<Connection diameter>>

Condensate inlet	Condensate outlet	Motive pressure inlet	Exhaust port
Rc 1	Rc 1	Rc 1/2	Rc 1/2



Weight: 17 kg

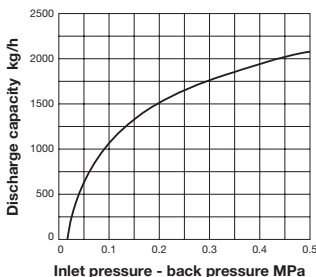
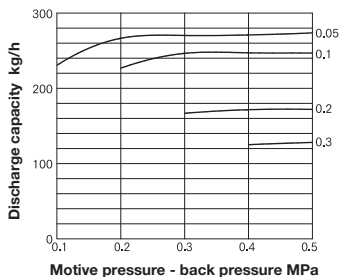


Please refer to P. 6-8.

■ Assist Capacity (Pump Capacity)

The assist capacity depends on the inflow height of condensate. Multiply the inflow height by the appropriate corrected coefficient shown in the table below.

■ Steam Trap Capacity

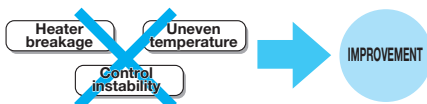


■ Corrected Coefficient for Assist

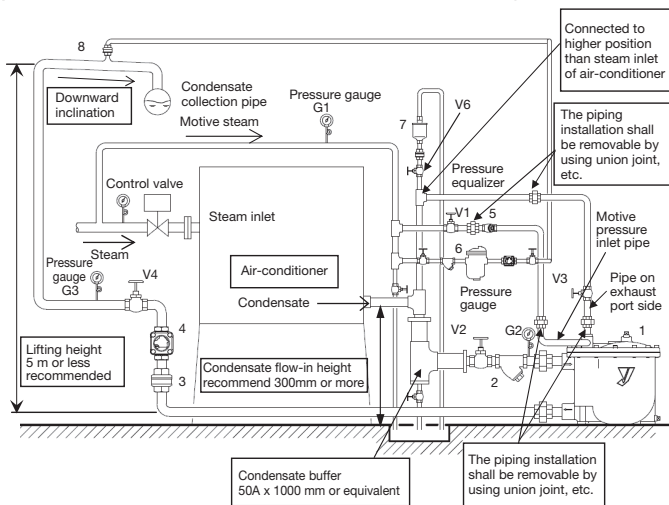
Inflow height (mm)	Corrected coefficient
250	0.65
300	1.0
400	1.1
500	1.75

Intended purpose is as follows:

- Air-conditioning at clean room
- Drying machine for gravure printing
- Drying machine for film processing



Example of measures to condensate accumulation in air-conditioner (countermeasures to stall)



* There is a possibility that the inside of the heat exchanger becomes vacuum pressure by the usage condition.

1		Assist trap TFA-2000	—	5		Strainer SY-5 15A (80mesh)	4
2		Strainer SY-5 25A (80mesh)	4	6		Steam trap TB-20 15A	5
3		Check valve SCV-2 25A	19	7		Air vent valve TS-7 15A	5
4		Sight glass SLM-1S 25A	7	8		Check valve SCV-2 15A	19