

GD-4

Direct type	Pilot type	Piston	Diaphragm
Bellows	Internal sensing	External sensing	Stainless steel
With handle	Built-in strainer	Slight pressure	Remote
Valve leakage 0	Nylon		

■Features

1. Diaphragm with a large pressure sensing area has high accuracy to set pressure.
2. No outside leakage since there is no gland part.



■Specifications

Application	Air, Other non-dangerous fluids					
Nominal size	15-50A			65-150A		
Diaphragm diameter (mm)	φ 400	φ 340	φ 256	φ 400	φ 340	φ 256
Inlet pressure	300 kPa					
Reduced pressure (kPa)	2-5	5-10	10-25	2-4	10-20	20-50
			25-50	4-6		50-100
			50-100	6-10		100-200
			100-200			100-200
Adjusted reduced pressure	70% or less of inlet pressure (gauge pressure)					
Minimum differential pressure	1 kPa	2 kPa	3 kPa	1 kPa	2 kPa	3 kPa
Maximum pressure reduction ratio	7:1			10:1		
Application temperature	5-80°C					
Valve seat leakage	No leakage for 15A-50A. 0.5% or less of rated flow rate for 65A-150A.					
Material	Body	Cast iron *1				
	Valve	NBR		Stainless steel		
	Valve seat, Spindle	Stainless steel				
	Diaphragm	NBR				
Connection	JIS 10K FF flanged					

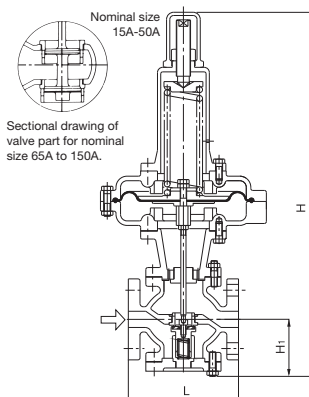
*1 Available with carbon steel or stainless steel body for 20A to 150A.

■ Dimensions (mm) and Weights (kg)

Nominal size	L	H		H ₁	Weight
		Ha	Hb		
15A	166	565	580	90	27
20A	170	565	580	90	27
25A	170	565	580	90	28
32A	180	585	600	100	28
40A	180	585	600	100	29
50A	180	595	610	105	31
65A	215	700	715	125	39
80A	260	715	730	135	48
100A	300	785	800	160	64
120A	360	840	855	190	88
150A	382	895	910	220	123

Note) Dimension H will be different depends on diaphragm diameter. (Ha: ϕ 256 Hb: ϕ 340, ϕ 400)

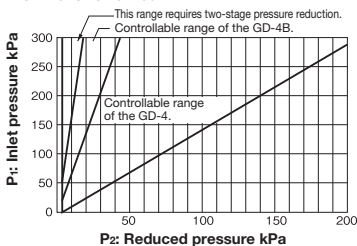
Note) The value of product weights are when diaphragm diameter is ϕ 256. Please add 5kg for ϕ 340, and 9kg for ϕ 400.



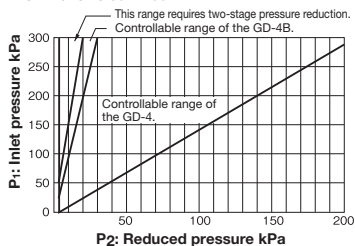
Structure will be different depends on nominal size and diaphragm diameter.

GD-4 Specifications Selection Chart

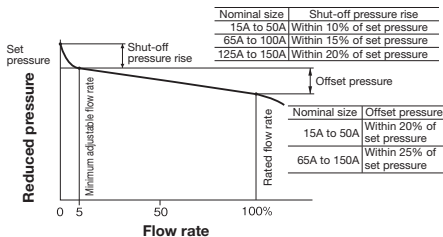
Nominal size 15A-50A



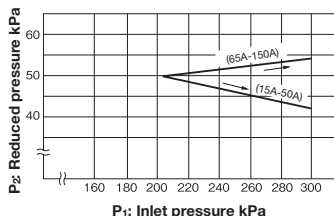
Nominal size 65A-150A



Flow Characteristic Chart

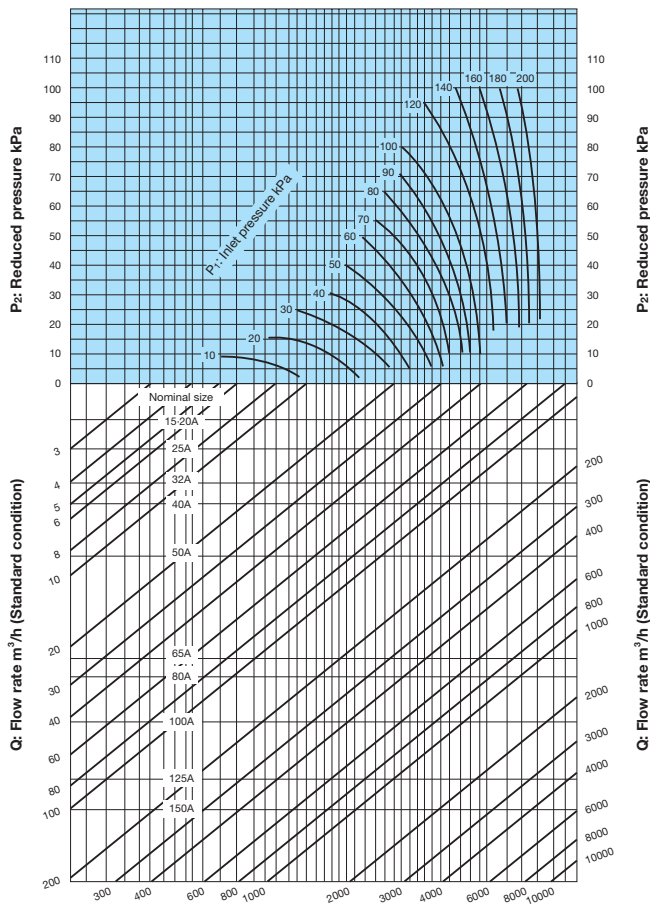


Pressure Characteristic Chart



This chart shows variation in reduced pressure when the inlet pressure of 200 kPa is changed to 300 kPa while the reduced pressure is set at 50 kPa.

Nominal Size Selection Chart (For Air)



* Set the safety factor at 80 to 90%.