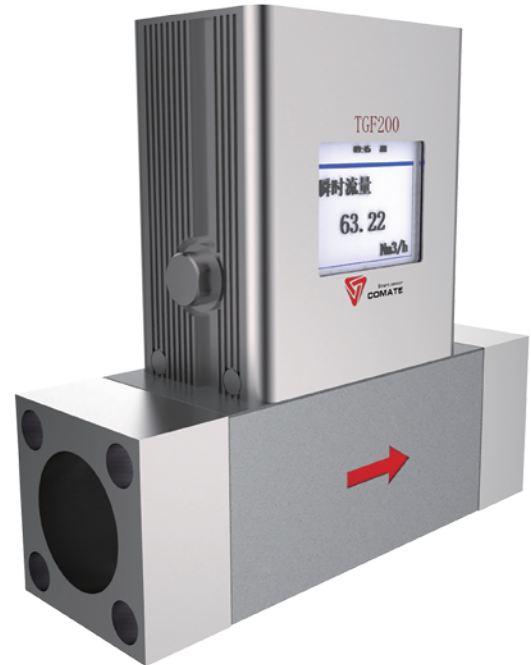


## Working principle

TGF200 series micro flow meter measure dry air and nitrogen and other non-corrosive gas base on thermal mass flow measurement technology. It is designed to measure the mass and standard flow in small pipe lines in general industry and laboratory.

Beside mass/standard flow, TGF200 can also measure temperature and pressure. User can choose 4~20mA output or Modbus@RS485 to upload data to their system. TGF200 also support blue tooth communication, so users can read and set the meter on cellphone with COMATE APP.



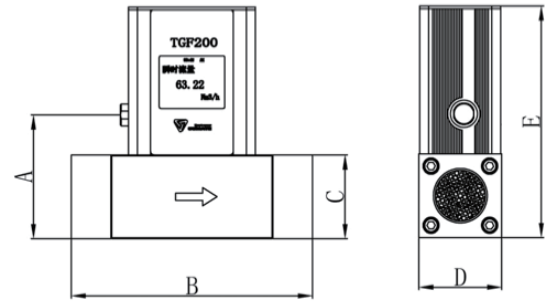
## Special features

- Thermal mass measuring technology, direct mass/standard flow measurement
- 6 digit dual line LED screen
- Low cost economical model
- Blue tooth for operating on cellphone
- 1.5% reading + 0.3% full scale accuracy in 100:1 measurement range
- 1/2" ~ 1" (8mm~25mm) small pipe line measurement, G or MNPT thread connection optional
- On-line diagnose available
- Require only 3D upstream and 2D downstream straight pipe run

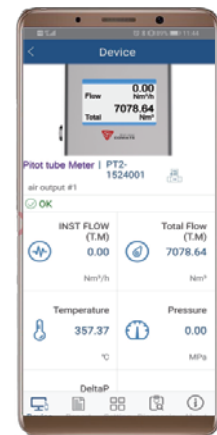
Pipe size (mm)	Pipe size (inch)	Standard (0.3~30 Nm/s)		Standard (0.6~60 Nm/s)		Option 1 (0.9~90 Nm/s)	
		Min (NL/min)	Max (NL/min)	Min (NL/min)	Max (NL/min)	Min (NL/min)	Max (NL/min)
8 mm	1/4"	0.9	90	1.8	180	2.7	270
10 mm	3/8"	1.4	140	2.8	280	4.2	420
15 mm	1/2"	3.2	320	6.4	640	9.5	950
20 mm	3/4"	5.6	560	11.3	1130	16.9	1690
25 mm	1"	8.8	880	17.7	1170	26.5	2650

## Specification

Fluid Compatibility	Air, Nitrogen and other non-corrosive fluid
Pipe diameter	8mm~25mm (1/4" ~ 1")
Flow velocity range	0.3 ~ 30 Nm/s or 0.6~60 Nm/s or 0.9 ~ 90 Nm/s
Accuracy	1.5% of reading + 0.3% of full scale
Repeatability	0.3% of reading
Storage Temperature	-20 ~ +50°C
Fluid Temperature	-20 ~ +100°C
Pressure rating	1.6 MPa
Power supply	10 ~ 35 VDC / 200 mA
Response time	160 millisecond
Output	Frequency (4~20 mA optional)
Communication	RS-485, Bluetooth
Date displayed	Mass flow, Normal flow Total flow
Housing	Aluminum alloy, IP54
Wet part material	Aluminum alloy



Pipe size	A	B	C	D	E
8 mm	60	144	38	38	119.5
10 mm	60	144	38	38	119.5
15 mm	60	179	38	38	119.5
20 mm	68	230	46	46	127.5
25 mm	68	230	46	46	127.5



Operation on cellphone

- Reading
- Setting
- Remote diagnose

## Mode number

The standard model number is usually TGF200-2-A-XXX,  
Please reference to the table below for what the model codes stand for.

### Mode codes

1	Model	TGF200	Basic Model	
		1	0.3 ~ 30 Nm/s	Optional
2	Flow range	2	0.6 ~ 60 Nm/s	Standard
		3	0.9 ~ 90 Nm/s	Optional
3	Output	A	frequency, RS485, blue tooth	Standard
		B	frequency, 4~20mA, RS485, blue tooth	Optional
4	Connection	G	G thread female	
		08	DN8 (1/4")	
		10	DN10 (3/8")	
5	Pipe size	15	DN15 (1/2")	
		20	DN20 (3/4")	
		25	DN25 (1")	