

02



YSL-1 Type



YSL-2 Type

## YSL-1, 2/2K Type Safety Valve(Low Lift Type)

The type YSL can be commonly used for various types of fluid (steam, vapor, liquid). It has a simple structure and is made of materials with a superb level of corrosion resistance. It is a safety valve that can be used for various purposes, such as a pressure vessel, safety device for various instruments and equipment, hot water boiler, water (including hot water) supplying equipment, cooling and heating facility, and safety device of pressure reducing valves.

### Features

- Simple structure and outstanding performance.
- Disc and seat are free from leakage or transformation issues, thanks to a precision machining process.
- Test lever attached : Periodical performance inspections can be conducted.
- Approval from the Korea Occupational Safety and Health Agency (KOSHA).

### Specifications

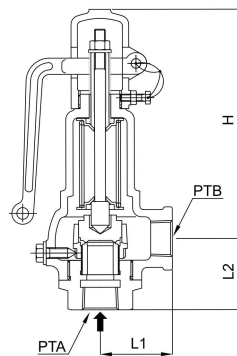
| Type                    | YSL-1         | YSL-2      |
|-------------------------|---------------|------------|
| Test lever              | Yes           | No         |
| Applicable fluid        | Steam, air    | water      |
| Set pressure range      | 0.034~1.0 MPa |            |
| Fluid temperature       | 220°C below   | 80°C below |
| End connection          | KS PT SCREW   |            |
| Materials               | Body          | GC200      |
|                         | Disc, seat    | STS304     |
| Hydraulic test pressure | 1.5MPa        |            |

### Dimensions

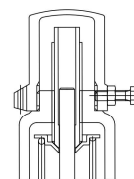
(mm)

| Size<br>Inlet x Outlet<br>di X do | Seat<br>diameter<br>ds | Throat<br>diameter<br>dt | Throat<br>area(mm <sup>2</sup> )<br>A | Lift<br>L | Face to<br>Face |    | Heigh(H) |       | Connection<br>size |     | Blow off<br>rate(kg/h) | Weigh (kg) |       |
|-----------------------------------|------------------------|--------------------------|---------------------------------------|-----------|-----------------|----|----------|-------|--------------------|-----|------------------------|------------|-------|
|                                   |                        |                          |                                       |           | L1              | L2 | YSL-1    | YSL-2 | IN                 | OUT |                        | YSL-1      | YSL-2 |
| 15(½")X15(½")                     | 15                     | 14.3                     | 18.8                                  | 18.8      | 40              | 41 | 127      | 112   | ½"                 | ½"  | 18,25311               | 1.1        | 1     |
| 20(¾")X20(¾")                     | 20                     | 19.4                     | 31.4                                  | 31.4      | 50              | 50 | 137      | 122   | ¾"                 | ¾"  | 30,42184               | 1.8        | 1.7   |
| 25(1")X25(1")                     | 25                     | 24.7                     | 55.0                                  | 54.9      | 55              | 60 | 162      | 148   | 1"                 | 1"  | 53,23823               | 2.4        | 2.3   |
| 40(1½")X40(1½")                   | 40                     | 38.4                     | 125.7                                 | 125.6     | 70              | 75 | 230      | 216   | 1½"                | 1½" | 121,6874               | 5.7        | 5.5   |
| 50(2")X50(2")                     | 50                     | 49.5                     | 204.2                                 | 204.1     | 80              | 80 | 245      | 245   | 2"                 | 2"  | 197,742                | 8.6        | 9     |

### Dimensional drawing



YSL-1Type



YSL-2 Type