

- ⑧
- ①
- ④
- ⑨
- ③
- ⑩
- ⑤
- ⑫
- ⑦
- ②

| NO | NAME OF PARTS    | Q.ty | MATERIAL | SPECIFICATIONS                                      |
|----|------------------|------|----------|---|
| 1  | BODY             | 1    | FC 200   |   |
| 2  | STRAINER         | 1    | FC 200   |   |
| 3  | DISC SEAT        | 1    | FC 200   |   |
| 4  | DISC             | 1    | FC 200   |   |
| 5  | PLATE            | 1    | SS 400   |   |
| 6  | BOLT&NUT         | 4    | SUS304   | M8X40   |
| 7  | STUD BOLT        | 1    | SUS304   | M6X16   |
| 8  | PIN              | 1    | SUS304   | $\phi 5_{\text{mm}} \cdot 65A = \phi 6_{\text{mm}}$ |
| 9  | GASKET PACKIN    | 1    | NBR      | t=2mm   |
| 10 | DISC SEAT PACKIN | 1    | NBR      | 40A t=2mm · t=3mm                                   |
| 11 | LEVER            | 1    | PCD450   |   |
| 12 | BOLT&NUT         | 1    | SUS304   | M6X30   |

HYDROSTATIC TEST PRESSURE  
 VALVE BODY (WATER) . . . 0.980MPa  
 VALVE SEAT (WATER) . . . 0.049MPa  
 OF AUXILIARY COOLING WATER PUMP

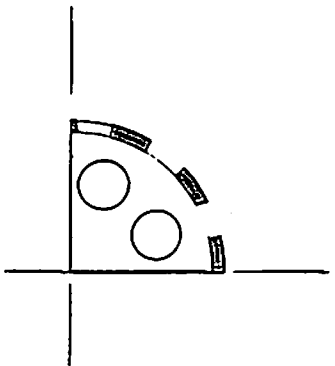
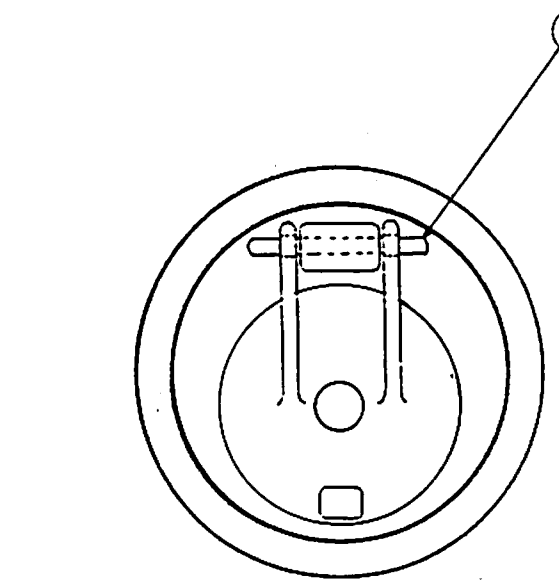
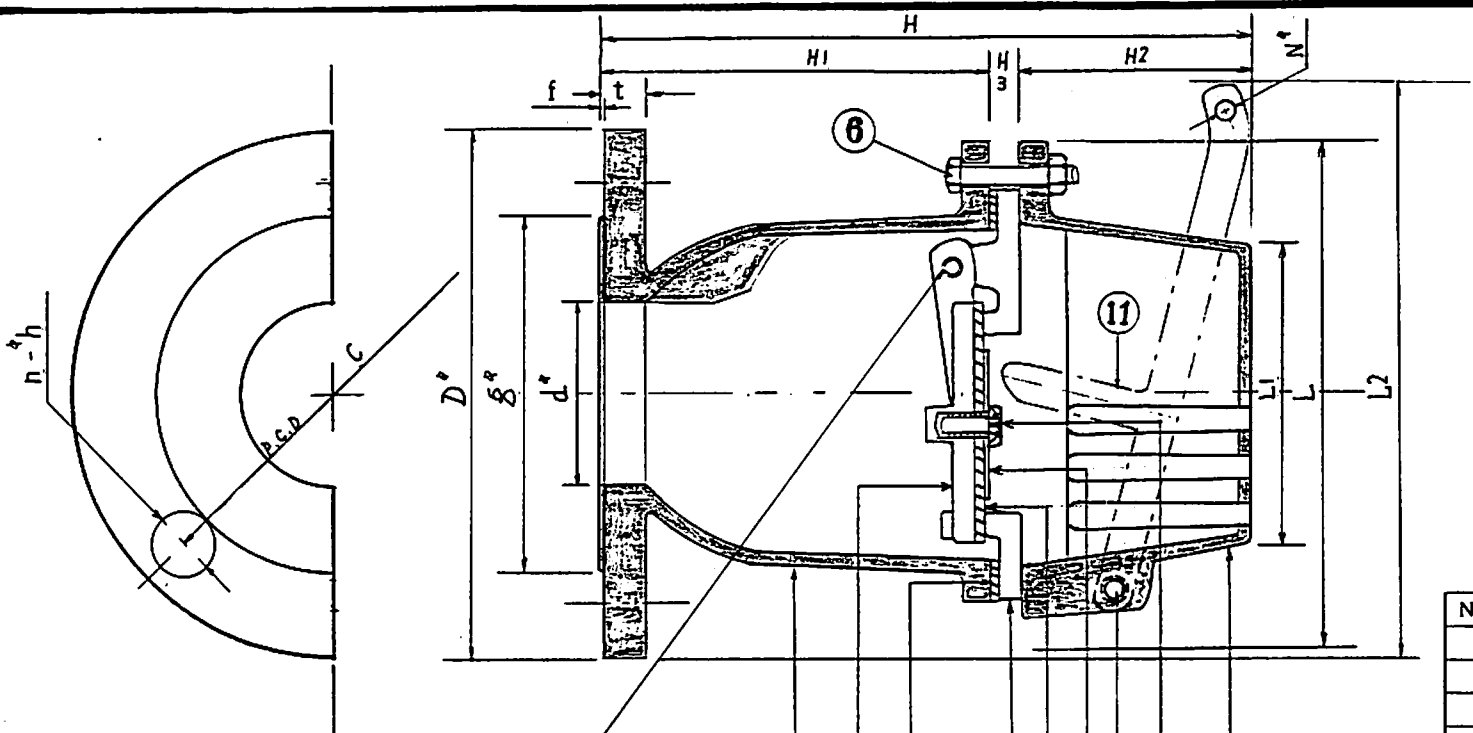
(NAME) FOOT VALVE  
 FLANGE STANDARD  
 ALL/FC (10K)

|       |                             |         |         |
|-------|-----------------------------|---------|---------|
| WEIGH | 40A=4Kg                     | 50A=5Kg | 65A=6Kg |
| Paint | LACQUER UNDER COAT A Primer |         |         |

(mm)

| SIZE | d  | D   | t  | f | g   | h   | H1  | H2 | H3 | L   | L1 | C   | n | h  | L2  | N   |
|------|----|-----|----|---|-----|-----|-----|----|----|-----|----|-----|---|----|-----|-----|
| 40A  | 40 | 140 | 16 | 2 | 85  | 152 | 90  | 55 | 7  | 137 | 70 | 105 | 4 | 19 | 160 | 6.3 |
| 50A  | 50 | 155 | 16 | 2 | 100 | 180 | 114 | 59 | 7  | 157 | 85 | 120 | 4 | 19 | 190 | 6.3 |
| 65A  | 65 | 175 | 16 | 2 | 120 | 190 | 116 | 65 | 9  | 168 | 90 | 140 | 4 | 19 | 215 | 6.3 |

|           |             |                      |
|-----------|-------------|----------------------|
| DATE APPD | Aug. 01. 11 | DRAWING<br>NO. 011.1 |
| APPD BY   | A. Tamaki   |                      |
| CHKD BY   |             |                      |
| DRAWN BY  | TAMAKI      |                      |



| NO | NAME OF PARTS    | Q.ty | MATERIAL | SPECIFICATIONS |
|----|------------------|------|----------|----------------|
| 1  | BODY             | 1    | FC 200   |                |
| 2  | STRAINER         | 1    | FC 200   |                |
| 3  | DISC SEAT        | 1    | FC 200   |                |
| 4  | DISC             | 1    | FC 200   |                |
| 5  | PLATE            | 1    | SS 400   |                |
| 6  | BOLT&NUT         | 4    | SUS304   | M8X45          |
| 7  | STUD BOLT        | 1    | SUS304   | M6X16          |
| 8  | PIN              | 1    | SUS304   | φ6mm           |
| 9  | GASKET PACKIN    | 1    | NBR      | t=2mm          |
| 10 | DISC SEAT PACKIN | 1    | NBR      | t=3mm          |
| 11 | LEVER            | 1    | FCD450   |                |
| 12 | BOLT&NUT         | 1    | SUS304   | M6X30          |

HYDROSTATIC TEST PRESSURE  
 VALVE BODY(WATER) . . . 0.980MPa  
 VALVE SEAT(WATER) . . . 0.049MPa  
 OF AUXILIARY COOLING WATER PUMP  
 (NAME) FOOT VALVE  
 FLANGE STANDARD  
 ALL/FC (10K)

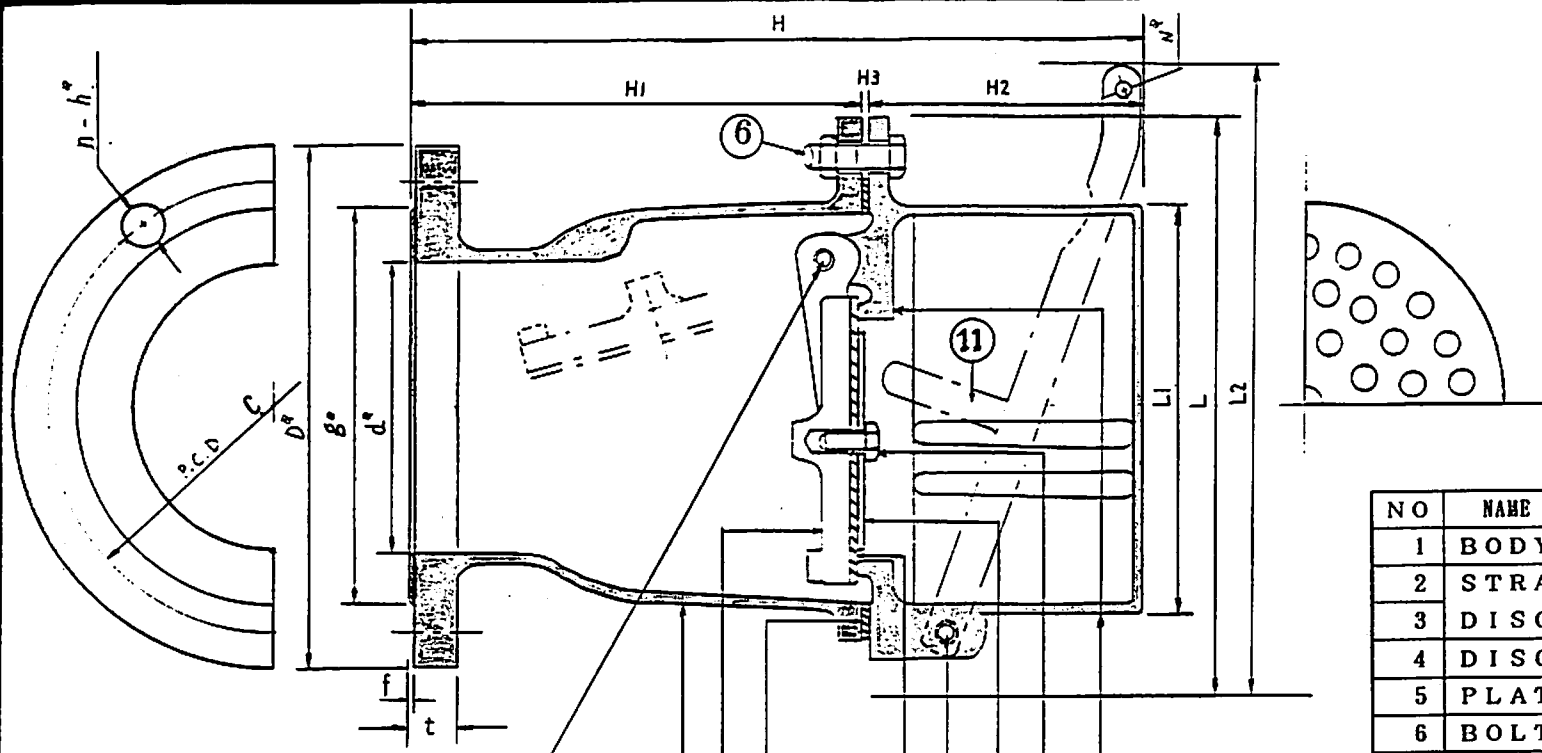
|       |                             |
|-------|-----------------------------|
| WEIGH | 80A=8Kg                     |
| Paint | LACQUER UNDER COAT A Primer |

|           |             |                     |
|-----------|-------------|---------------------|
| DATE APPD | Aug. 01. 11 | DRAWING<br>NO. 0112 |
| APPD BY   | A. Tamaki   |                     |
| CHKD BY   |             |                     |
| DRAWN BY  | TAMAKI      |                     |

(mm)

| SIZE | d  | D   | t  | f | g   | II  | II1 | II2 | II3 | L   | L1  | C   | n | h  | L2  | N   |
|------|----|-----|----|---|-----|-----|-----|-----|-----|-----|-----|-----|---|----|-----|-----|
| 80A  | 80 | 185 | 20 | 2 | 130 | 224 | 140 | 74  | 10  | 178 | 108 | 150 | 8 | 19 | 215 | 6.3 |

TAMAKI IRONWORKS CO., LTD.



| NO | NAME OF PARTS    | Q. ty | MATERIAL | SPECIFICATIONS |
|----|------------------|-------|----------|----------------|
| 1  | BODY             | 1     | FC 200   |                |
| 2  | STRAINER         | 1     | FC 200   |                |
| 3  | DISC SEAT        |       |          |                |
| 4  | DISC             | 1     | FC 200   |                |
| 5  | PLATE            | 1     | SS 400   |                |
| 6  | BOLT&NUT         | 6     | SS 400   | M12X50 · 55    |
| 7  | STUD BOLT        | 1     | SUS304   | M8X16          |
| 8  | PIN              | 1     | SUS304   | φ 8mm          |
| 9  | GASKET PACKIN    | 1     | N B R    | t=2mm          |
| 10 | DISC SEAT PACKIN | 1     | N B R    | t=3mm          |
| 11 | LEVER            | 1     | FCD450   |                |
| 12 | BOLT&NUT         | 1     | SUS304   | M8X50 · 55     |

HYDROSTATIC TEST PRESSURE  
 VALVE BODY(WATER) . . . 0.980MPa  
 VALVE SEAT(WATER) . . . 0.049MPa  
 OF AUXILIARY COOLING WATER PUMP

(NAME) FOOT VALVE  
 FLANGE STANDARD  
 ALL/FC (10K)

| WEIGH | 100A=15Kg                   | 125A=20Kg | 150A=26Kg |
|-------|-----------------------------|-----------|-----------|
| Paint | LACQUER UNDER COAT A Primer |           |           |

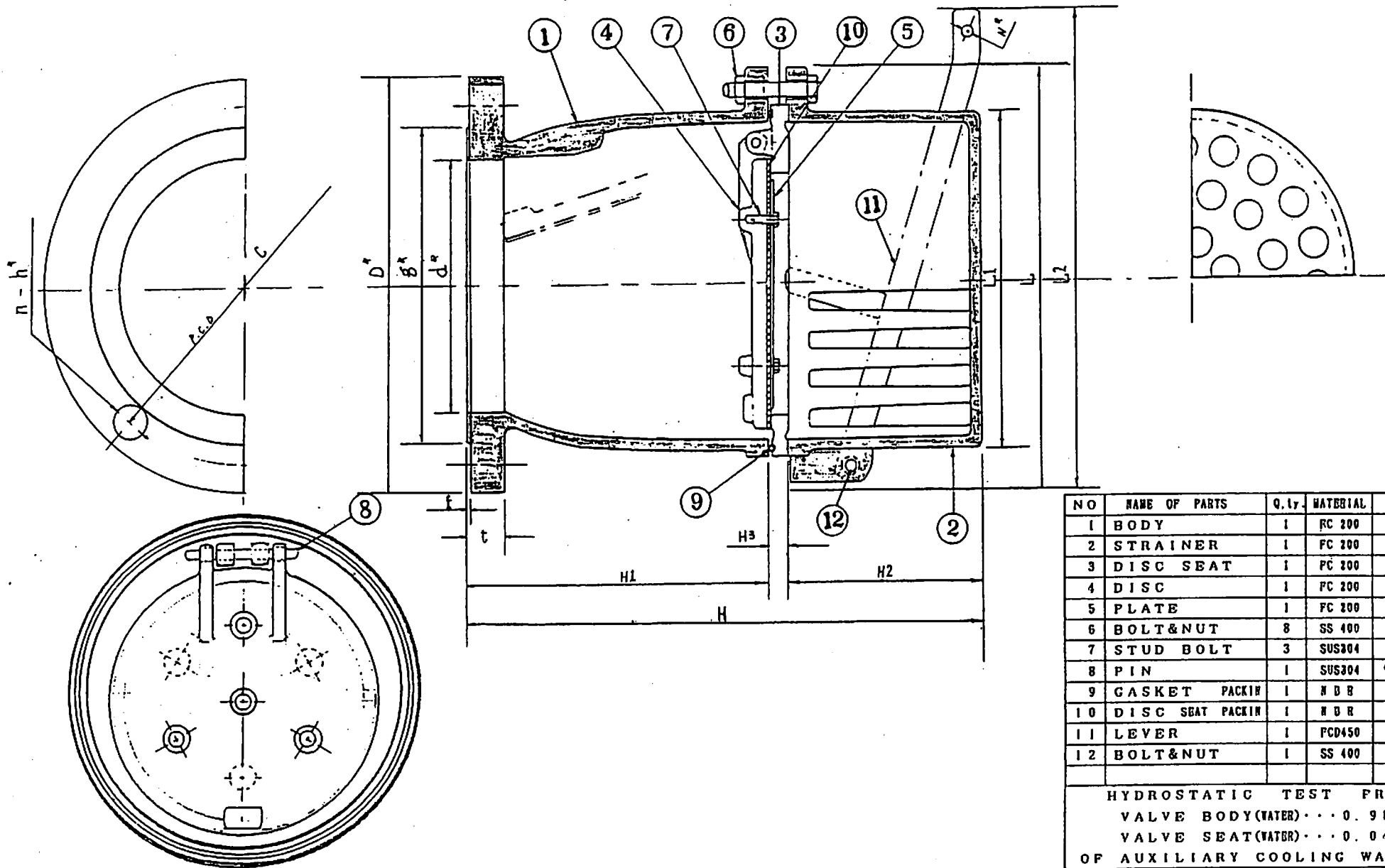
|           |             |                     |
|-----------|-------------|---------------------|
| DATE APPD | Aug. 01. 11 | DRAWING<br>NO. 0113 |
| APPD BY   | A. Tamaki   |                     |
| CHKD BY   |             |                     |
| DRAWN BY  | TAMAKI      |                     |

(mm)

| SIZE | d   | D   | t  | f | g   | h   | H1  | H2  | H3 | L   | L1  | C   | n | h  | L2  | N   |
|------|-----|-----|----|---|-----|-----|-----|-----|----|-----|-----|-----|---|----|-----|-----|
| 100A | 100 | 210 | 20 | 2 | 155 | 260 | 170 | 88  | 2  | 244 | 168 | 175 | 8 | 19 | 290 | 8.3 |
| 125A | 125 | 250 | 22 | 2 | 185 | 306 | 189 | 115 | 2  | 275 | 186 | 210 | 8 | 23 | 330 | 8.3 |
| 150A | 150 | 280 | 22 | 2 | 215 | 318 | 198 | 118 | 2  | 290 | 218 | 240 | 8 | 23 | 350 | 8.3 |



TAMAKI IRONWORKS CO., LTD.



| NO | NAME OF PARTS    | Q.ty | MATERIAL | SPECIFICATIONS |
|----|------------------|------|----------|----------------|
| 1  | BODY             | 1    | FC 200   |                |
| 2  | STRAINER         | 1    | FC 200   |                |
| 3  | DISC SEAT        | 1    | FC 200   |                |
| 4  | DISC             | 1    | FC 200   |                |
| 5  | PLATE            | 1    | FC 200   |                |
| 6  | BOLT&NUT         | 8    | SS 400   | M16X80         |
| 7  | STUD BOLT        | 3    | SUS304   | M10X30         |
| 8  | PIN              | 1    | SUS304   | φ9.5mm         |
| 9  | GASKET PACKIN    | 1    | NBR      | φ6mm           |
| 10 | DISC SEAT PACKIN | 1    | NBR      | t=4mm          |
| 11 | LEVER            | 1    | PCD450   |                |
| 12 | BOLT&NUT         | 1    | SS 400   | M12X75         |

HYDROSTATIC TEST PRESSURE  
 VALVE BODY (WATER) . . . 0.980MPa  
 VALVE SEAT (WATER) . . . 0.049MPa  
 OF AUXILIARY COOLING WATER PUMP

(NAME) FOOT VALVE  
 FLANGE JIS  
 ALL/FC (10K)

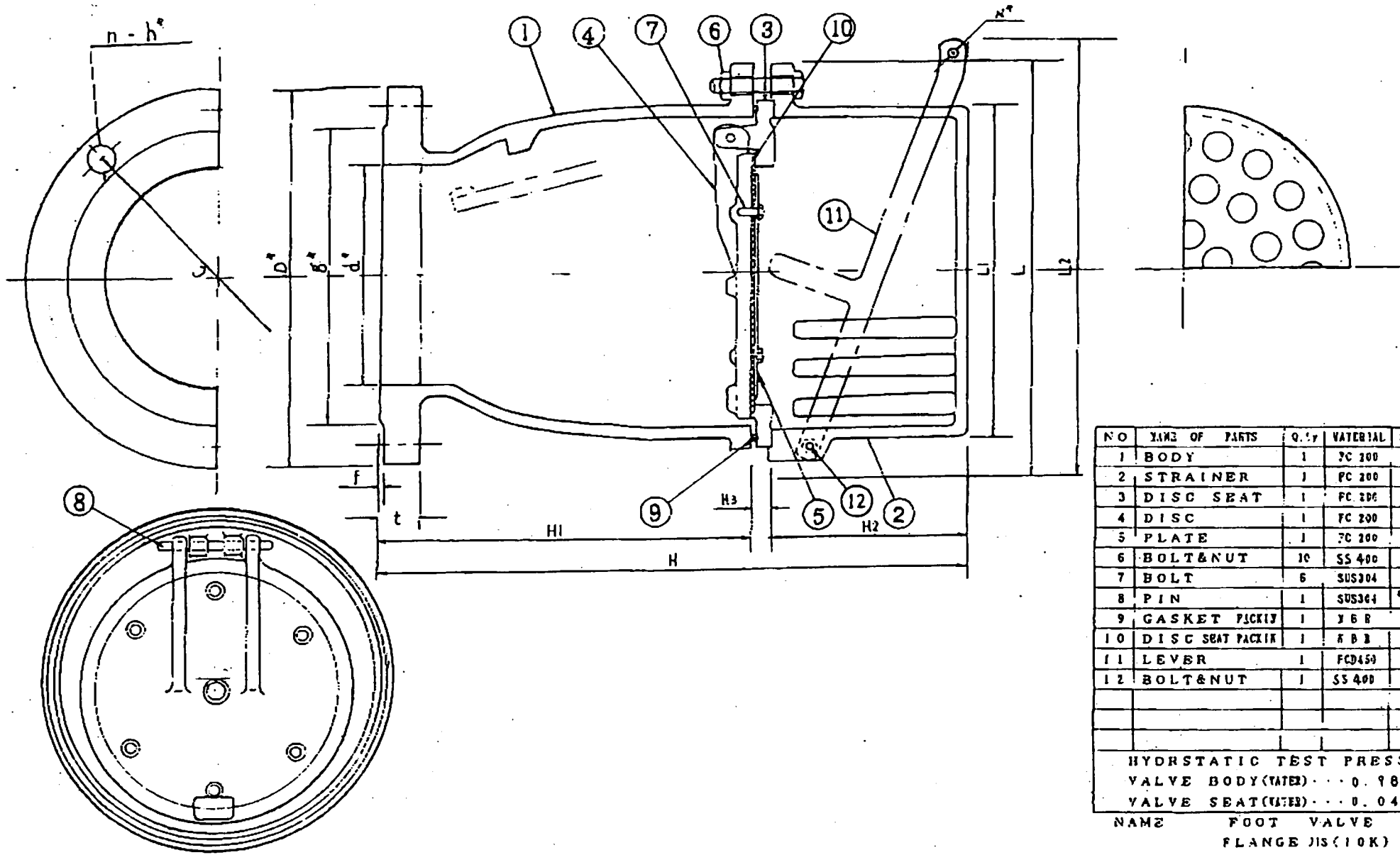
|       |                             |           |
|-------|-----------------------------|-----------|
| WEIGH | 200A=51Kg                   | 250A=78Kg |
| Paint | LACQUER UNDER COAT A Primer |           |

(mm)

| SIZE | d   | D   | t  | f | g   | H   | H1  | H2  | H3 | L   | L1  | C   | n  | h  | L2  | N  |
|------|-----|-----|----|---|-----|-----|-----|-----|----|-----|-----|-----|----|----|-----|----|
| 200A | 200 | 330 | 26 | 2 | 265 | 446 | 270 | 158 | 18 | 375 | 278 | 290 | 12 | 23 | 430 | 13 |
| 250A | 250 | 400 | 30 | 2 | 325 | 510 | 300 | 190 | 20 | 445 | 350 | 355 | 12 | 25 | 480 | 13 |

|           |             |                     |
|-----------|-------------|---------------------|
| DATE APPD | Aug. 01. 11 | DRAWING<br>NO. 0114 |
| APPD BY   | A. Tamaki   |                     |
| CHKD BY   |             |                     |
| DRAWN BY  | TAMAKI      |                     |

2012年 5月11日 9時30分 玉環工(株) NO. 9149 P. 1



| NO | NAME OF PARTS    | QTY | MATERIAL | SPECIFICATIONS |
|----|------------------|-----|----------|----------------|
| 1  | BODY             | 1   | FC 200   |                |
| 2  | STRAINER         | 1   | FC 200   |                |
| 3  | DISC SEAT        | 1   | FC 200   |                |
| 4  | DISC             | 1   | FC 200   |                |
| 5  | PLATE            | 1   | FC 200   |                |
| 6  | BOLT & NUT       | 10  | SS 400   | M20X90         |
| 7  | BOLT             | 6   | SUS304   | Y13X30         |
| 8  | PIN              | 1   | SUS304   | φ12.6mm        |
| 9  | GASKET PICKUP    | 1   | Y 6 B    | φ6mm           |
| 10 | DISC SEAT PACKER | 1   | 8 B B    | 1-6mm          |
| 11 | LEVER            | 1   | FC450    |                |
| 12 | BOLT & NUT       | 1   | SS 400   | M12X90         |

HYDROSTATIC TEST PRESSURE  
 VALVE BODY (WATER) ... 0.980 MPa  
 VALVE SEAT (WATER) ... 0.049 MPa  
 NAME FOOT VALVE  
 FLANGE JIS (10K)  
 ALL/PC

|       |                             |
|-------|-----------------------------|
| WEIGH | 300A=165Kg                  |
| Paint | LACQUER UNDER COAT A Primer |

|           |             |                     |
|-----------|-------------|---------------------|
| DATE 1970 | Jan. 17. 11 | DRAWING<br>NO. 0115 |
| APPD BY   | A. TAMAKI   |                     |
| CHKD BY   |             |                     |
| DRAWN BY  | TAMAKI      |                     |

(mm)

| SIZE | d   | D   | l  | f | g   | H   | H1  | H2  | H3 | L   | L1  | C   | a  | b  | L2  | X  |
|------|-----|-----|----|---|-----|-----|-----|-----|----|-----|-----|-----|----|----|-----|----|
| 300A | 302 | 445 | 32 | 3 | 370 | 670 | 404 | 246 | 20 | 550 | 456 | 400 | 16 | 25 | 590 | 13 |

TAMAKI IRON WORKS CO., LTD.