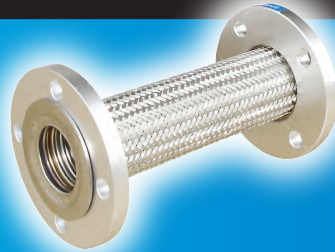


Flange Type Metal Flexible Hose

# SF6700 (Equivalent to SF600)

Prevention for damage of pipe and equipment by ground sinking, earthquake, etc. Making pipe alignment. Connection with machine and pipe.



## Feature

Both ends loose flange. All contacting fluid parts are stainless steel. Longer effective length enable higher lateral movement.

## Applications

Connection of tank (oil, water, chemicals, etc.). Connection of plant piping. Connection of water piping.

## Structure (SW Type)

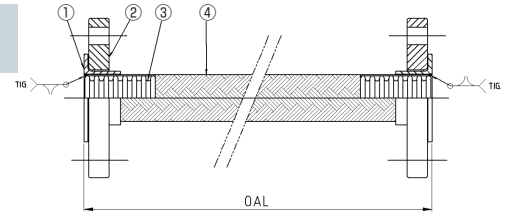
No.	Parts	Material
①	Lap Rings	SUS304/SUS316
②	Loose flanges	SS400(Zinc-Plated)
③	Flexible Tube	SUS304/SUS316L
④	Wire braid	SUS304

## Structure(NW Type)

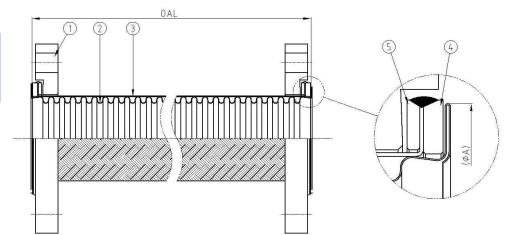
No.	Parts	Material
①	Non Welding Flange	SUS400(Zinc Plated)
②	Flexible Hose	SUS304
③	Wire braid	SUS304
④	Ring	SS400 (Nickel-Plated)
⑤	Back Ring	SS400 (Nickel-Plated)

## Structure

For 15A-50A (SW Type)



For 65A-300A (NW Type)



Max working Temperature: 250 C

## Dimensions and Allowable Movements

Type	Size	Min bending radius [mm]	Lateral Movem		Ineffective Length [mm]
			300mm OAL	500mm OAL	
SW	15	200	84	223	36
	20	200	84	223	36
	25	200	84	223	36
	32	250	66	194	40
	40	250	65	193	41
	50	350	47	145	41
NW	65	410	36	118	54
	80	450	32	106	58
	100	560	26	86	58
	125	660	22	73	58
	150	815	17	58	61
	200	1015	13	46	67
	250	1220	10	37	71
	300	1420	8	31	74

## Installation Guide

Metal flexible hoses should not be bent to radius smaller than recommended in their specifications, otherwise fatigue and premature failure will occur. Avoid twisting of metal flexible hoses. Please consult us for dynamic movement.

**Note:** The content of this catalog is subject to change without prior notice.

**TOZEN Corporation**

8-4, Asahi, Yoshikawa  
Saitama 342-0008 Japan

WE47-1404

