

DIMENSIONS

UNIT: mm

SIZE		d	D	H	D1	L	R	MASS (kg)
mm	in.							
40	1.1/2	54	86	128	55	54	26	1.6
50	2	63	101	143	70	56	33	2.0
65	2.1/2	77	121	150	70	56	37	2.8
80	3	90	131	156	70	59	44	3.6
100	4	116	156	169	70	66	55	5.0
125	5	143	187	183	70	72	67	7.0

NOTE (1) VALVE SIZE (mm) IDENTIFICATION.
 (2) TENSILE STRENGTH AND ELONGATION SHALL BE EQUAL TO OR GREATER THAN THOSE FOR C3771 IN JIS H3250.

NOTE

1. Although a SEAT makes NBR a standard, the SEAT of "EPDM" and "FKM" is also manufactured by demand.

SEAT	
<input type="checkbox"/>	NBR (STANDARD)
<input type="checkbox"/>	EPDM
<input type="checkbox"/>	FKM

124	SPRING	SUS304	
85	PLUG	S45CH	
68	HINGE PIN BUSH	CAC406C	
58B	SPRING WASHER	PTFE	
58A	PLATE WASHER	PTFE	
47	BODY WASHER	CAC406C	SIZE 40-100
30	BODY SEAT RING	C3531 (2)	
17B	STOP PIN	SUS304	
17A	HINGE PIN	SUS304	
16	NAME PLATE	A1100P-H	
10	WHEEL NUT	SS400	
9	HAND WHEEL	ZDC2	SIZE 40
		ADC12	SIZE 50-125
8	GLAND PACKING	T#2996NA	NON ASBESTOS
7	GLAND	C3604BD	
6	PACKING NUT	C3771BE	
4B	DISC	C3531 (2)	
4A	DISC	CAC406	
3	STEM	C3531 (2)	
2	BONNET	C3771BE	
1	BODY	FC250	SEAT=NOTE 1

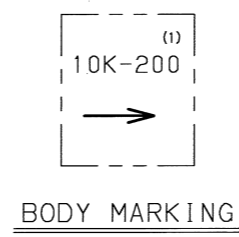
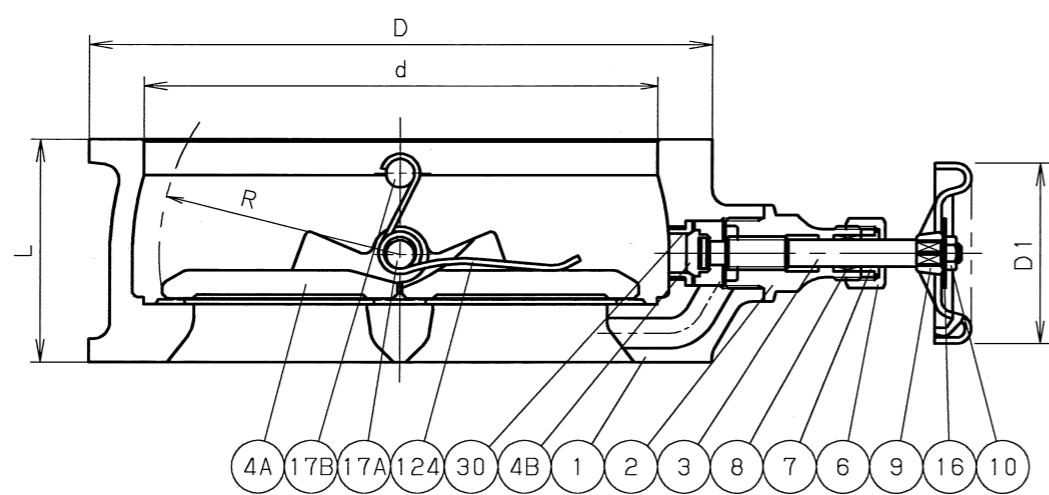
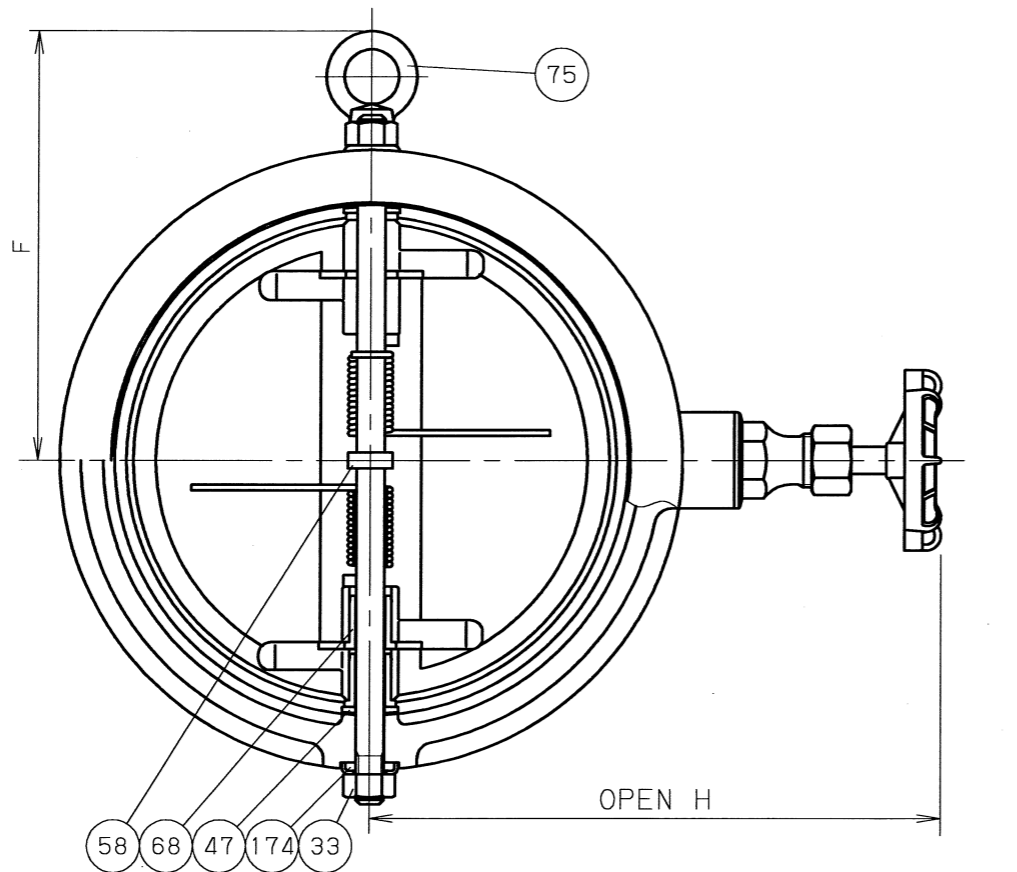
No.	PART	MATERIAL	NOTE
-----	------	----------	------

FACE TO FACE OR END TO END MAKER'S STANDARD	10K GRAY CAST IRON WAFER TYPE WING CHECK VALVE RUBBER SEAT
END CONNECTION WAFER JIS 10K	
WALL THICKNESS MAKER'S STANDARD	
PRESSURE TEST MAKER'S STANDARD	

APP'D	K. Kobayashi	VALVE CODE	FIG. No.		
CHK'D	H. Fuseya	10-FNW	440		
CHK'D		DRAWING No.	△		
PREP'D	K. Kohama	1A200000 △	MARK	DATE	BY
DATE	OCT.01.12				



Toyo Valve Co., Ltd.



DIMENSIONS UNIT: mm

SIZE		d	D	H	D1	L	R	F	MASS (kg)
mm	in.								
150	6	169	217	216	80	78	78	—	10
200	8	220	267	243	80	96	105	187	16
250	10	273	330	290	90	109	129	229	26
300	12	324	375	315	90	145	155	254	40
350	14	356	420	330	90	184	170	272	60
400	16	406	483	355	90	191	195	301	88
450	18	457	538	388	90	204	220	338	120

NOTE (1) VALVE SIZE (mm) IDENTIFICATION.
 (2) TENSILE STRENGTH AND ELONGATION SHALL BE EQUAL TO OR GREATER THAN THOSE FOR C3771 IN JIS H3250.

NOTE

1. Although a SEAT makes NBR a standard, the SEAT of "EPDM" and "FKM" is also manufactured by demand.

SEAT	
<input type="checkbox"/>	NBR (STANDARD)
<input type="checkbox"/>	EPDM
<input type="checkbox"/>	FKM

174	SEAL WASHER	SUS304	SEAL=NOTE 1
124	SPRING	SUS304	
75	EYE BOLT	SS400	SIZE 200-450
68	DISC BUSH	SUS304	
58	SPRING WASHER	PTFE	
47	BODY WASHER	PTFE	
33	NUT	SUS304	
30	BODY SEAT RING	C3531 (2)	
17B	STOP PIN	SUS304	
17A	HINGE PIN	SUS304	
16	NAME PLATE	A1100P-H	
10	WHEEL NUT	SS400	
9	HAND WHEEL	ADC12	
8	GLAND PACKING	T#2996NA	NON ASBESTOS
7	GLAND	C3604BD	
6	PACKING NUT	C3771BE	
4B	DISC	C3531 (2)	
4A	DISC	CAC406	
3	STEM	C3531 (2)	
2	BONNET	CAC406	
1	BODY	FC250	SEAT=NOTE 1

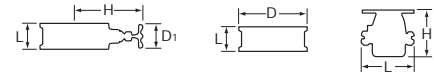
No.	PART	MATERIAL	NOTE
-----	------	----------	------



FACE TO FACE OR END TO END MAKER'S STANDARD	10K GRAY CAST IRON WAFER TYPE WING CHECK VALVE RUBBER SEAT
END CONNECTION WAFER JIS 10K	
WALL THICKNESS MAKER'S STANDARD	
PRESSURE TEST MAKER'S STANDARD	



APP'D	K. Kobayashi	VALVE CODE	FIG. No.		
CHK'D	H. Fuseya	10-FNW	440		
CHK'D		DRAWING No.	△		
PREP'D	K. Kohama	1A200000-1 △	MARK	DATE	BY
DATE	OCT.01.12				

TOYO Toyo Valve Co., Ltd.

Dual Plate Check / Ball Foot



Design	TOYO Standard									
Type	Dual Plate Check Valves									
Class	10K						150			
										
Fig.	365			440			442F			
Size	L	H	D ₁	L	H	D ₁	L	D		
40 (mm) 1½"	54	132	63	54	128	55				
50 2"	56	140	70	56	143	70	54	105		
65 2½"	56	150	70	56	150	70	54	124		
80 3"	59	156	70	59	156	70	57	137		
100 4"	66	169	70	66	169	70	64	175		
125 5"	72	183	70	72	183	70	70	197		
150 6"	78	212	80	78	216	80	76	222		
200 8"	96	240	80	96	243	80	95	279		
250 10"	109	289	90	109	290	90	108	340		
300 12"	145	316	90	145	315	90	143	410		
350 14"				184	330	90	184	451		
400 16"				191	355	90	191	514		
450 18"				204	388	90	203	549		
Material	Body	Bronze			Cast Iron			Cast Iron		
	Plate	Bronze			Bronze			Bronze		
	Seat	NBR			NBR			NBR		
Service conditions	80°C water, non-shock 1.4MPa 80°C water, oil, air 1.0MPa					1.03MPa (150psi) 80°C water				
Remarks	FPM or EPDM seat available By-pass valve mounted									

Design	TOYO Standard				
Type	Ball Foot Valves				
Class	10K				
					
Fig.	097		461		
Size	L	H	L	H	
40 (mm) 1½"	133	121			
50 2"	148	147			
65 2½"			173	161	
80 3"			193	188	
100 4"			236	229	
125 5"			271	289	
150 6"			305	335	
200 8"			388	449	
Material	Body	Bronze		Cast Iron	
	Seat	EPDM		EPDM	
	Ball	Polycarbonate		Polycarbonate	
Service conditions	70°C water 0.20MPa (29psi)				
Remarks					