

DIMENSIONS UNIT: mm

SIZE	d	D	L	MASS (Kg)	Q'ty
2	60	109	54	1.7	
2½	73	129	54	2.5	
3	89	144	57	3	
4	114	164	64	4.5	
5	141	194	70	6	

*1: SEAT ... NBR

124	SPRING	STAINLESS STEEL	
85	PLUG	CARBON STEEL	
75	EYE BOLT	CARBON STEEL	
58B	SPRING WASHER	PTFE	
58A	PLATE WASHER	PTFE	
47	BODY WASHER	PTFE	
17B	STOP PIN	STAINLESS STEEL	
17A	HINGE PIN	STAINLESS STEEL	
4	DISC	CAST BRONZE	B584-C83600
1	BODY	CAST IRON	A126-B *1

No. PART MATERIAL (ASTM)

FACE TO FACE OR END TO END
API 594

END CONNECTION
BS EN 1092-2 PN16

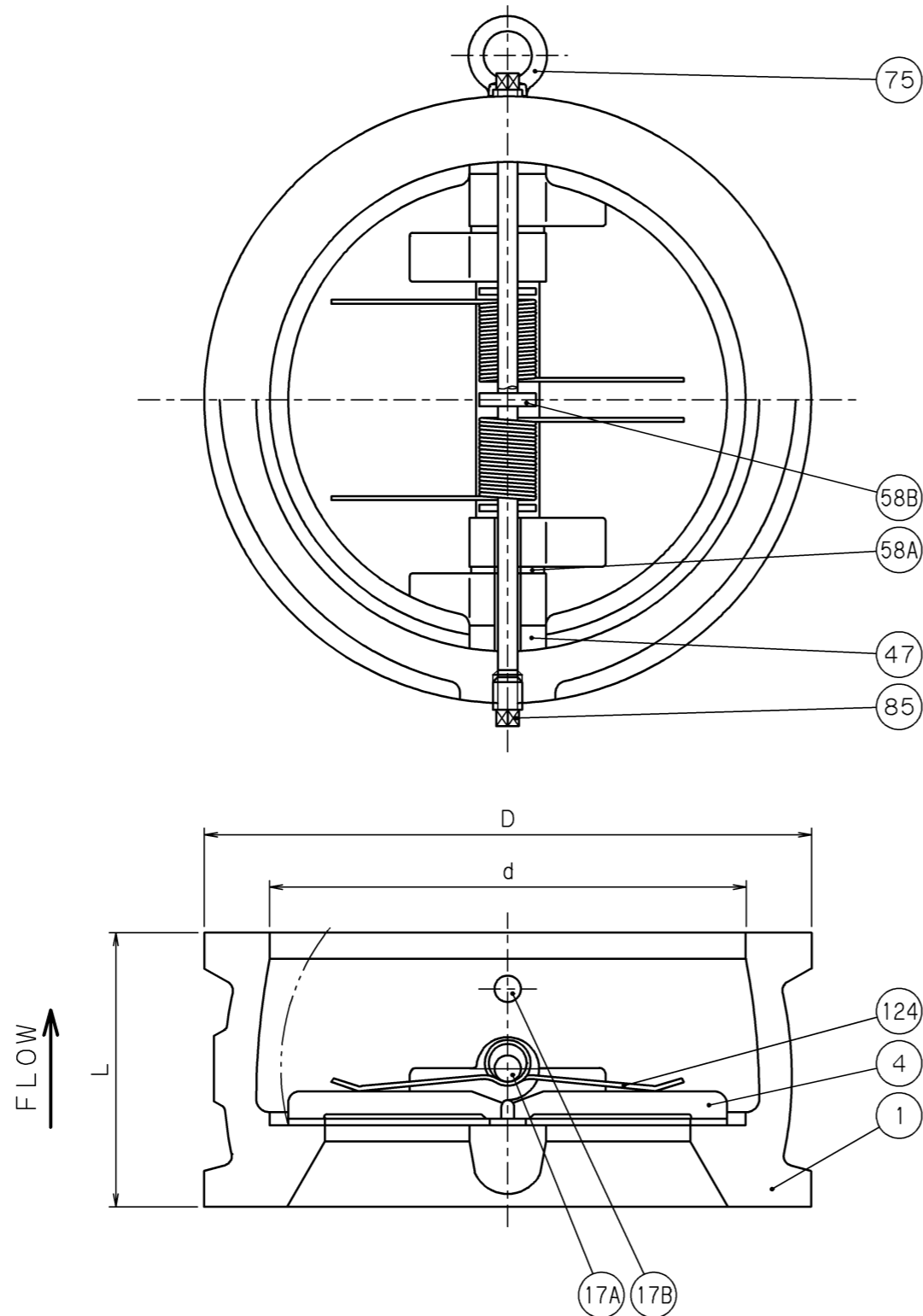
WALL THICKNESS
MAKER'S STANDARD

PRESSURE TEST
MAKER'S STANDARD

PN16
GRAY CAST IRON
WING CHECK VALVE
《DUAL PLATE WAFER TYPE》
RUBBER SEAT

APP'D	K.Kobayashi	FIGURE	PRODUCT CODE		
CHK'D	H.Fuseya	E16-FNW	443B		
CHK'D	M.Mochizuki	N/BY			
PREP'D	K.Kohama	DRAWING No.	△		
DATE	JUL.31.'15	E1312S032 △	MARK	DATE	BY

TOYO **Toyo Valve Co., Ltd.**



DIMENSIONS UNIT : mm

SIZE	d	D	L	MASS (Kg)	Q'ty
6	168	220	76	9	
8	219	275	95	19	
10	273	331	108	31	
12	324	386	143	52	
14	356	446	184	73	
16	406	498	191	104	
18	457	558	203	120	

*1: SEAT ... NBR

124	SPRING	STAINLESS STEEL	
85	PLUG	CARBON STEEL	
75	EYE BOLT	CARBON STEEL	
58B	SPRING WASHER	PTFE	
58A	PLATE WASHER	PTFE	
47	BODY WASHER	PTFE	
17B	STOP PIN	STAINLESS STEEL	
17A	HINGE PIN	STAINLESS STEEL	
4	DISC	CAST BRONZE	B584-C83600
1	BODY	CAST IRON	A126-B *1

No.	PART	MATERIAL (ASTM)
-----	------	-----------------

FACE TO FACE OR END TO END
API 594

END CONNECTION
BS EN 1092-2 PN16

WALL THICKNESS
MAKER'S STANDARD

PRESSURE TEST
MAKER'S STANDARD

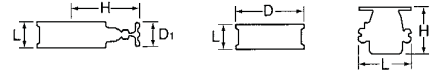
PN16
GRAY CAST IRON
WING CHECK VALVE
《DUAL PLATE WAFER TYPE》
RUBBER SEAT



APP'D	K.Kobayashi	FIGURE	PRODUCT CODE		
CHK'D	H.Fuseya	E16-FNW	443B		
CHK'D	M.Mochizuki	N/BY			
PREP'D	K.Kohama	DRAWING No.	△		
DATE	JUL.31.'15	E1312S026 △	MARK	DATE	BY





Toyo Valve Co., Ltd.

Dual Plate Check / Ball Foot



Design		TOYO Standard									
Type		Dual Plate Check Valves									
Class		10K					PN16				
											
Fig.		365			440			443B			
Size		L	H	D ₁	L	H	D ₁	L	D		
40 (mm)	1½"	54	132	63	54	128	55				
50	2"	56	140	70	56	143	70	54	109		
65	2½"	56	150	70	56	150	70	54	129		
80	3"	59	156	70	59	156	70	57	144		
100	4"	66	169	70	66	169	70	64	164		
125	5"	72	183	70	72	183	70	70	194		
150	6"	78	212	80	78	216	80	76	220		
200	8"	96	240	80	96	243	80	95	275		
250	10"	109	289	90	109	290	90	108	331		
300	12"	145	316	90	145	315	90	143	386		
350	14"				184	330	90	184	446		
400	16"				191	355	90	191	498		
450	18"				204	388	90	203	558		
Material	Body	Bronze			Cast Iron			Cast Iron			
	Plate	Bronze			Bronze			Bronze			
	Seat	NBR			NBR			NBR			
Service conditions		80°C water, non-shock 1.4MPa 80°C water, oil, air 1.0MPa					80oC Water, non-shock 1.6MPa				
Remarks		FPM or EPDM seat alavailable By-pass valve mounted									

Design		TOYO Standard			
Type		Ball Foot Valves			
Class		10K			
					
Fig.		097		461	
Size		L	H	L	H
40 (mm)	1½"	133	121		
50	2"	148	147		
65	2½"			173	161
80	3"			193	188
100	4"			236	229
125	5"			271	289
150	6"			305	335
200	8"			388	449
Material	Body	Bronze		Cast Iron	
	Seat	EPDM		EPDM	
	Ball	Polycarbonate		Polycarbonate	
Service conditions		70°C water 0.20MPa			
Remarks					