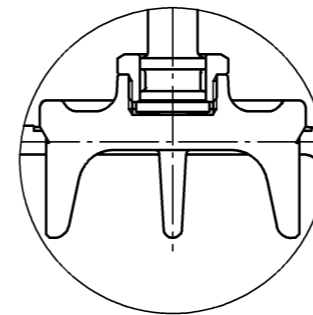
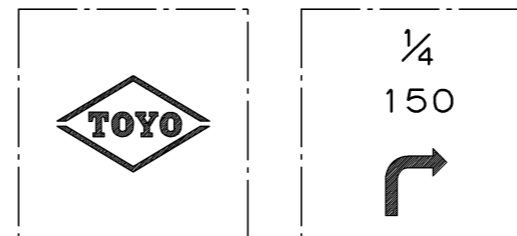


SIZE 1/4 to 1



SIZE 3



SIZE 1/4 & 3/8



SIZE 1/2 to 3  
BODY MARKING

DIMENSIONS

UNIT : mm

SIZE		d	d1	H	L	D	S	MASS (Kg)	Q'ty
A	B								
8	1/4	Rc 1/4	12.5	67	21	48	20	0.18	
10	3/8	Rc 3/8	13.5	69	24	48	23	0.22	
15	1/2	Rc 1/2	13.5	80	28	63	28	0.26	
20	3/4	Rc 3/4	19.0	94	34	70	35	0.43	
25	1	Rc 1	24.0	104	40	80	43	0.65	
32	1 1/4	Rc 1 1/4	32.0	127	47	90	52	1.03	
40	1 1/2	Rc 1 1/2	37.0	145	52	100	59	1.63	
50	2	Rc 2	48.5	173	61	110	72	2.69	
65	2 1/2	Rc 2 1/2	60.0	199	74	125	88	3.77	
80	3	Rc 3	69.0	214	85	140	105	5.32	

\*1: DEZINCIFICATION RESISTANT BRASS.  
\*2: ZINC PLATING.

16	NAME PLATE	ALUMINUM	
10	WHEEL NUT	CARBON STEEL *2	
9	HAND WHEEL	ALUMINUM DIE-CAST	B85
8	GLAND PACKING	ARAMID FIBERS GRAPHITE	
7	GLAND	BRASS ROD <sup>SIZE</sup> 1/4 to 3	B16
6	PACKING NUT	FORGED BRASS	B283-C37700
5	LOCK NUT	FORGED BRASS <sup>SIZE</sup> 1/4 to 3	B124-C37700
4	DISC	CAST BRONZE	B584-C84400
3	STEM	SPECIAL BRASS *1	
2	BONNET	CAST BRONZE <sup>SIZE</sup> 3	B584-C84400
		FORGED BRASS <sup>SIZE</sup> 1/4 to 2 1/2	B283-C37700
1	BODY	CAST BRONZE	B584-C84400

No.	PART	MATERIAL (ASTM)
-----	------	-----------------

FACE TO FACE OR END TO END  
MAKER'S STANDARD

END CONNECTION  
JIS B0203

WALL THICKNESS  
MAKER'S STANDARD

PRESSURE TEST  
MAKER'S STANDARD

CLASS 150  
CAST BRONZE  
SCREWED END ANGLE VALVE  
INSIDE SCREW, RISING STEM  
SWIVEL TYPE DISC, SCREWED BONNET

APP'D	K. Kobayashi	FIGURE	PRODUCT CODE
CHK'D	H. Fuseya	150E-BL-N	260A
CHK'D	M. Mochizuki	DRAWING No.	
PREP'D	K. Kohama	T1211S017 $\triangle$	$\triangle$
DATE	JUL. 31. '15		MARK DATE BY



**Toyo Valve Co., Ltd.**