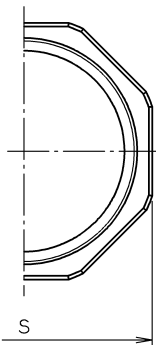


SIZES 2 to 3

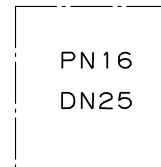
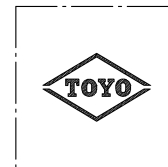


SIZES 2½ & 3

DIMENSIONS

UNIT: mm

SIZE		d	H	L	D	S	MASS (Kg)	Q'ty
A	B							
10	3/8	3/8	76	43	48	27.0		
15	1/2	1/2	76	43	48	27.0		
20	3/4	3/4	86	48	55	33.0		
25	1	1	98	53	63	40.0		
32	1¼	1¼	118	60	70	48.5		
40	1½	1½	126	63	80	55.0		
50	2	2	154	71	90	68.0		
65	2½	2½	180	87	90	85.0		
80	3	3	211	96	100	99.0		



BODY MARKING

\*2: ZINC-PLATED.

\*1: DEZINCIFICATION RESISTANT BRASS

16	NAME PLATE	ALUMINUM	
10	WHEEL NUT	CARBON STEEL *2	A307-B
9	HAND WHEEL	ALUMINUM DIE-CAST	B85
8	GLAND PACKING	ARAMID FIBERS GRAPHITE	
7	GLAND	BRASS ROD SIZES 2 to 3	B16
6	PACKING NUT	FORGED BRASS	B283-C37700
5	LOCK NUT	BRASS ROD	B16
4	DISC	CAST BRONZE	B584-C84400
3	STEM	SPECIAL BRASS *1	
2	BONNET	CAST BRONZE	B584-C84400
1	BODY	CAST BRONZE	B584-C84400

No.	PART	MATERIAL (ASTM)
-----	------	-----------------

FACE TO FACE OR END TO END  
MAKER'S STANDARD

END CONNECTION  
BS21 (JIS B0203)

WALL THICKNESS  
MAKER'S STANDARD

PRESSURE TEST  
MAKER'S STANDARD

PN16  
CAST BRONZE  
SCREWED END GATE VALVE  
NON-RISING STEM  
SOLID WEDGE DISC

APP'D	K.Kobayashi	VALVE CODE	FIG.No.		
CHK'D	H.Fuseya	H-BS PN16	275P		
CHK'D	K.Kohama	DRAWING No.	△		
PREP'D	Y.Ushiyama	T1210S020 △	△		
DATE	OCT.05.'12		MARK	DATE	BY



**Toyo Valve Co., Ltd.**