

BALL FLOAT

Its operating principle is based on the different density between steam and condensate. A float through a simple lever mechanism opens or closes the valve according to the condensate level in the trap. Air discharge is ensured by a thermostatic element.

MAIN FEATURES

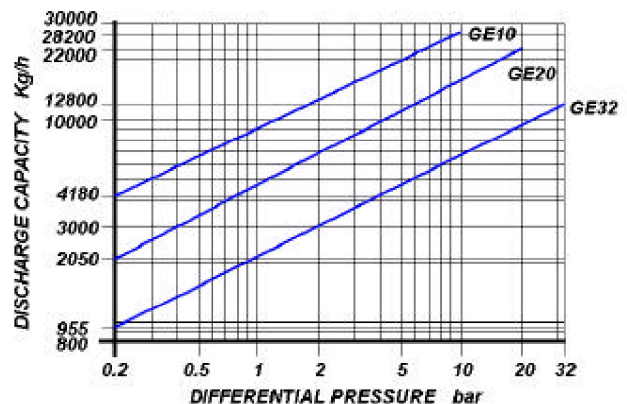
Continuons discharge. Discharge of condensate at steam temperature. Simple and reliable construction. It does not withstand waterhammer. Suitable on superheated steam



APPLICATIONS

- Heat exchangers
- Heater batteries
- Pans
- Drying cilinders
- Ovens

DISCHARGE CAPACITY



Cold water capacities are 2 to 4 times greater than the above .
Safety factor = 1.2 – 1.5

SIZES

1½" – 2"

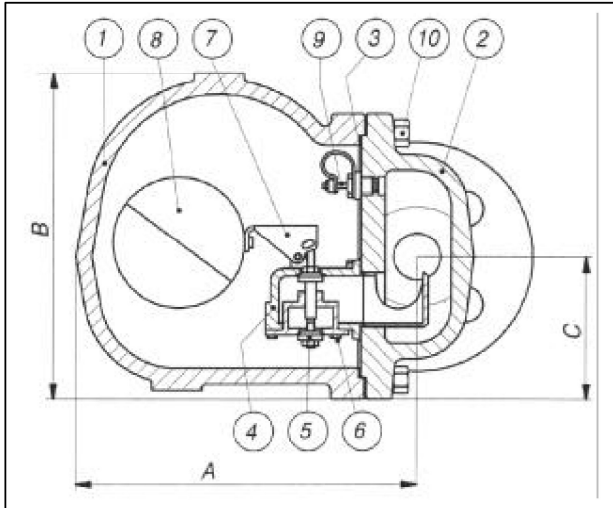
CONNECTIONS

| | |
|-------------|---------------------------------|
| SCREWED | ANSI B1.20.1 (NPT) / BS21 (BSP) |
| SOCKET WELD | ANSI B16.11 |
| FLANGED | ANSI 150#/300#/600#/UNI/DIN |

LIMITING CONDITIONS (according to ISO 6552)

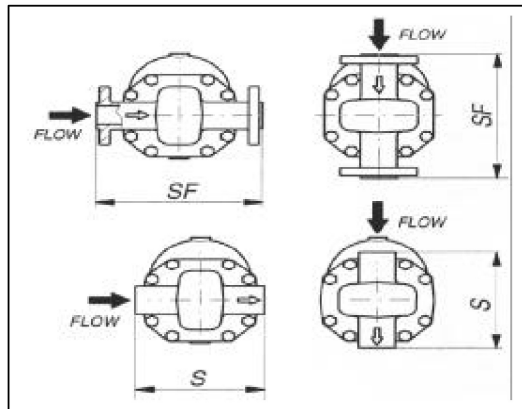
| | |
|--------------------------------------|----------|
| Steam Trap rating | ANSI 300 |
| PMA: Max allowable pressure | 50 bar |
| TMA: max allowable temperature | 410°C |
| PMO: max working pressure | 40 bar |
| TMO: max working temperature | 370°C |
| Max. Differential pressure (GE 10) | 10 bar |
| Max. Differential pressure (GE 20) | 20 bar |
| Max. Differential pressure (GE 32) | 32 bar |

BALL FLOAT STEAM TRAPS GE CF8M



| POS. | DESCRIPTION | MATERIALS | SPARES |
|------|-------------|-----------------|--------|
| 1 | Body | ASTM A351 CF8M | |
| 2 | Cover | ASTM A351 CF8M | |
| 3 | Gasket | 316 / GRAPHITE | X |
| 4 | Seat | AISI 316 | X |
| 5 | Valve | AISI 316 | X |
| 6 | Screws | STAINLESS STEEL | X |
| 7 | Lever | AISI 316 | X |
| 8 | Ball float | AISI 316 | X |
| 9 | Air vent | STAINLESS STEEL | |
| 10 | Bolts | ASTM A193 B8 | |

| Size (inches) | S | A | B | C | Weight (Kg) | Flanged | | | | | | | |
|------------------|-----|-----|-----|-----|----------------|-----------------------|----|------|----|------|----|------|----|
| | | | | | | UNI-DIN PN16-25-40 | | 150# | | 300# | | 600# | |
| | | | | | | SF | Kg | SF | Kg | SF | Kg | SF | Kg |
| 1½" | 260 | 258 | 250 | 109 | 34 | 320 | 37 | 320 | 37 | 320 | 39 | 320 | 41 |
| "2" | 260 | 258 | 250 | 109 | 34 | 320 | 38 | 320 | 38 | 320 | 40 | 320 | 42 |



INSTALLATION

The steam trap must be fitted with the float arm in a horizontal plane so that it rises and falls vertically with the flow direction indicated on the body.

HOW TO SERVICE

By installing a new mechanism assembly (4),(5),(6),(7), if necessary also a ball float (8) and a thermostatic air vent (9), you can bring the steam trap to the "as new from factory" condition. This operation is carried out without removing the trap from the pipeline. Always fit a new gasket (3) when reassembling.

How to order: i.e. GE 20 CF8M 2" 600 RF

DOUGLAS ITALIA S.p.A Località Pradaglie – 29013 CARPANETO PIACENTINO (PC)

OFFICIAL WEB SITE: www.douglas-italia.com