

### BALL FLOAT

Its operating principle is based on the different density between steam and condensate. A float through a simple lever mechanism opens or closes the valve according to the condensate level in the trap. Air discharge is ensured by a thermostatic element.



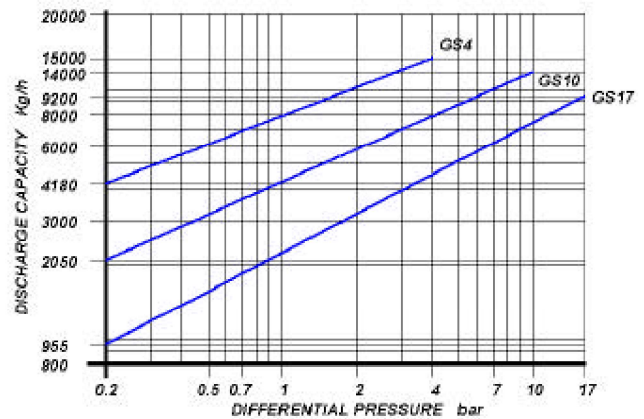
### MAIN FEATURES

Continuous discharge. Discharge of condensate at steam temperature. Simple and reliable construction. It does not withstand waterhammer. Suitable on superheated steam.

### APPLICATIONS

- Heat exchangers
- Heater batteries
- Pans
- Drying cylinders
- Ovens

### DISCHARGE CAPACITY



Cold water capacities are 2 to 4 times greater than the above.  
Safety factor = 1.2 – 1.5

### SIZES

1½" – 2"

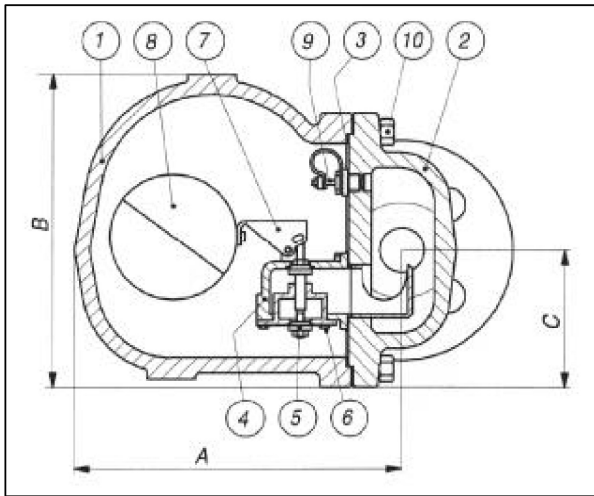
### CONNECTIONS

Screwed	BS 21 (BSP)
Flanged	ANSI 150# / 300# / UNI / DIN

### LIMITING CONDITIONS ( according to ISO 6552 )

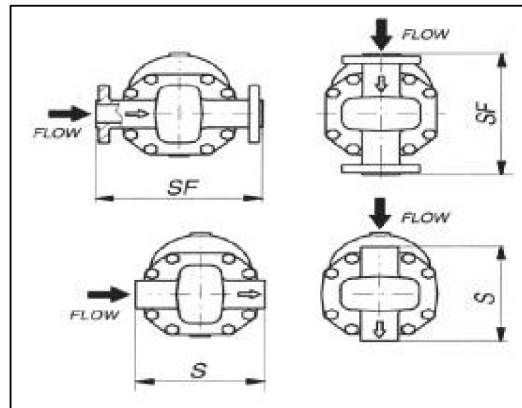
Steam Trap rating	DIN PN 25
PMA: Max allowable pressure	25 bar
TMA: max allowable temperature	300°C
PMO: max working pressure	17 bar
TMO: max working temperature	250°C
Max. Differential pressure ( GS 4 )	4 bar
Max. Differential pressure ( GS 10 )	10 bar
Max. Differential pressure ( GS 17 )	17 bar

## BALL FLOAT STEAM TRAPS GS



POS.	DESCRIPTION	MATERIALS	SPARES
1	Body	GGG40 (DIN 1693)	
2	Cover	GGG40 (DIN 1693)	
3	Gasket	CAF	X
4	Seat	AISI 410	X
5	Valve	AISI 410	X
6	Screws	STAINLESS STEAL	X
7	Lever	AISI 304	X
8	Ball float	AISI 304	X
9	Air vent	STAINLESS STEAL	X
10	Bolts	8.8 (UNI 3740-74)	

Size (inches)	S	A	B	C	Weight (Kg)	Flanged					
						UNI-DIN PN16-25-40		150#		300#	
						SF	Kg	SF	Kg	SF	Kg
1½"	260	258	250	109	34	320	37	320	37	320	39
2"	260	258	250	109	34	320	38	320	38	320	40



### INSTALLATION

The steam trap must be fitted with the float arm in a horizontal plane so that it rises and falls vertically with the flow direction indicated on the body.

### HOW TO SERVICE

By installing a new mechanism assembly (4),(5),(6),(7), if necessary also a ball float (8) and a thermostatic air vent (9), you can bring the steam trap to the "as new from factory" condition. This operation is carried out without removing the trap from the pipeline. Always fit a new gasket (3) when reassembling.

**How to order:** i.e. GS 17 2" 300 RF

**DOUGLAS ITALIA S.p.A** Località Pradaglie – 29013 CARPANETO PIACENTINO ( PC )

OFFICIAL WEB SITE: [www.douglas-italia.com](http://www.douglas-italia.com)