

THERMODYNAMIC

This type of trap uses steam dynamic energy to close the discharge orifice. A disc closes both the inlet and outlet orifice. Condensate can lift the disc and be discharge, but when steam is formed its dynamic energy will create a low pressure area (Bernulli Law) under the disc which draws it towards the seat.



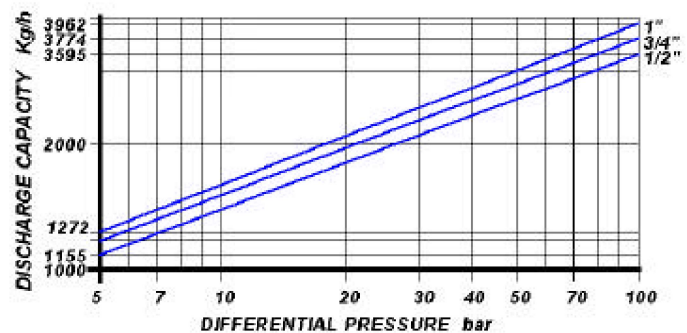
MAIN FEATURES

Reduced dimension and weight simple and reliable. It discharges air. It withstands waterhammer. Condensate discharge is intermittent. Some loss of live steam.

APPLICATIONS

- Ironing machines
- Steam mains
- Tracing lines
- Turbines
- Marine applications
- Presses

DISCHARGE CAPACITY



Cold water capacities are 2 to 4 times greater than the above .
Safety factor = 1.2 – 1.5

SIZES

1/2" – 3/4" - 1

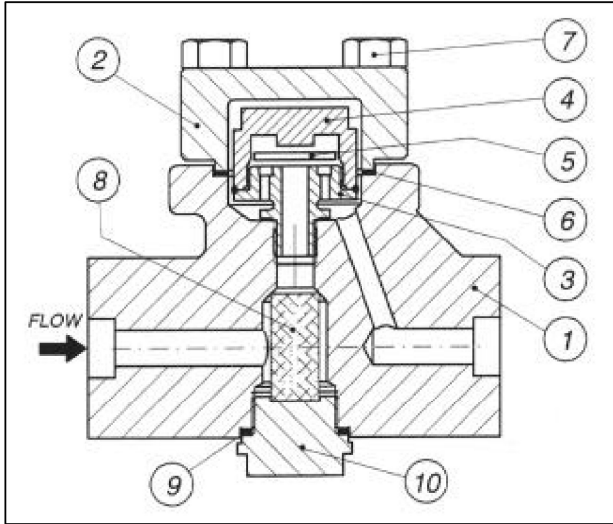
CONNECTIONS

SCREWED	ANSI B 1.20.1 (NPT)
BUTTWELD	ANSI B 16.25
SOCKET WELD	ANSI B 16.11
FLANGED	ANSI 600#/1500#/UNI/DIN

LIMITING CONDITIONS (according to ISO 6552)

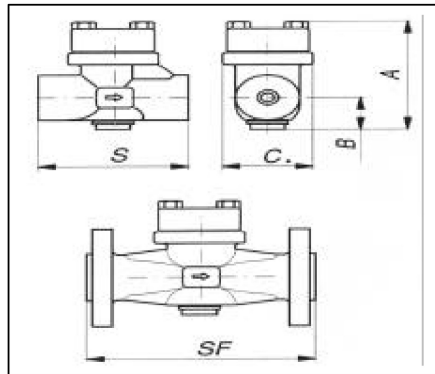
Steam Trap rating	1500
PMA: Max allowable pressure	230 bar
TMA: max allowable temperature	400°C
PMO: max working pressure	100 bar
TMO: max working temperature	400°C
Minimum Working Pressure	5 bar
PMOB: max working back pressure	80%

THERMODYNAMIC STEAM TRAPS DK 100 A105



POS.	DESCRIPTION	MATERIALS	SPARES
1	Body	ASTM A 105	
2	Cover	ASTM A105	
3	Seat	AISI 421	X
4	Cover seat	AISI 431	X
5	Disc	AIS 431	X
6	Gasket	316 / GRAPHITE	X
7	Bolts	ASTM A194 B7	
8	Screen	AISI 304	X
9	Gasket	316 / GRAPHITE	X
10	Strainer cap	ASTM A105	

Size (inches)	S	A	B	C	Weight (Kg)	Flanged					
						UNI-DIN PN 40 - 100		600#		1500#	
						SF	Kg	SF	Kg	SF	Kg
½"	155	150	48	94	7	242	9	242	8.5	242	11.3
¾"	155	150	48	94	7	242	11	242	9.2	242	12.5
1"	155	150	48	94	7	242	12.2	242	11.2	242	15



INSTALLATION

The steam trap can be installed in any position, however it should be preferably fitted on horizontal pipelines.

HOW TO SERVICE

By installing a new seat-disc assembly you can bring the steam trap to the "as new from factory" condition. This operation is carried out in a few minutes without removing steam trap from the pipeline. Remove cover(2), unscrew seat-disc assembly and clean the inside of the body. Screw in the new assembly (3-4-5), replace body, cover, gasket (6) and reassemble cover. To service the strainer unscrew the relevant cap (10) and clean or replace the screen. Screwing the cap back always fit a new gasket (9).

How to order: i.e. DK 100 1" SW A105

DOUGLAS ITALIA S.p.A Località Pradaglie – 29013 CARPANETO PIACENTINO (PC)

OFFICIAL WEB SITE: www.douglas-italia.com