

10



## YAC-4 Type Air Vent

As an air vent valve for liquid, it automatically discharges remaining air from pipelines and air from sealed tanks, thereby allowing for smooth flow of fluid.

### Features

- Large discharge capacity covers up to 10~20 kgf/cm<sup>2</sup>g.
- Flexible disc structure for smooth & subtle operation.
- NBR-based seat features outstanding level of air tightness.
- Easy repair & inspections manufactured.

### Specifications

Type		YAC-4
Size		15(½"), 20(¾"), 25(1")
Applicable fluid		Cold / hot water
Applicable pressure		Maximum 1.0MPa
Fluid temperature		5~80°C
End connection		KS PT SCREW
Materials	Body	GC200
	Disc, seat	STS, EPDM
Hydraulic test pressure		1.5MPa

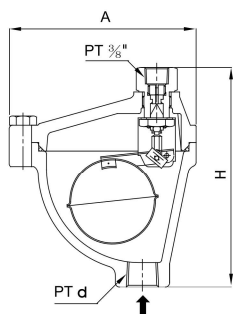
► Install a strainer (40 MESH or more) on the leaflet during installation of the valve.

### Dimensions

(mm)

Size	d	A	H	Weight (kg)
15(½")	½"	115	153	2.0
20(¾")	¾"	115	153	2.0
25(1")	1"	115	153	2.2

### Dimensions drawing



### Air discharge volume curve

