

YBJ-3S, 3W Bellows Type Expansion Pipe Joint

Mark inscription allowed product/ Korea register of ahipping model approval

This is an expansion pipe joint used for cold water, hot water, or other copper pipelines.

Features

- Absorb the expansion & contraction of pipelines by temperature changes.
- Stainless steel ensuring high level of corrosion resistance leads little fluid pressure loss : Inner tube materials which come into contact with fluid are made of stainless steel.
- Outer tube has been used to prevent damage to bellows from impact.
- Internal pressure type product prevents noise.

07



YBJ-3S Type



YBJ-3W Type

Specifications

Type	YBJ-3S	YBJ-3W
Structure	Single type	Double type
Applicable fluid	Cold/hot water, Oil, Air	
Applicable pressure	Maximum 1.0MPa	
Fluid temperature	220°C below	
Expansion/contraction length	35mm	70mm
End connection	KS D 5578 Dimensions-based socket-welded type	
Materials	BELLOWS, Inner tube	STS
	Outer tube	SPP
	SOCKET	CUT
Hydraulic test pressure	1.5MPa	

▶ The fixing bolt should be loosened after the hydro-pressure test. ▶ Custom made for steam.

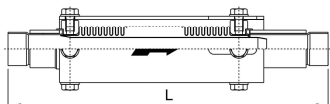
Dimensions

>> YBJ-3S Type

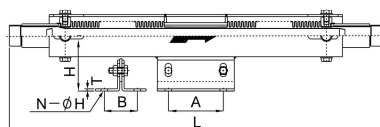
(mm)

Size	L	Expansion/contraction length		Weight(kg)
		Expansion length	Contraction length	
25(1")	365	10	25	4.1
32(1¼")	365	10	25	4.1
40(1½")	365	10	25	5.2
50(2")	365	10	25	7.1
65(2½")	415	10	25	8.2
80(3")	415	10	25	10.3
100(4")	415	10	25	15.7
125(5")	440	10	25	30.4
150(6")	440	10	25	41.4
200(8")	440	10	25	52.3

Dimensions drawing



YBJ-3S Type



YBJ-3W Type

>> YBJ-3W Type

(mm)

Size	L	Expansion/contraction length		H	A	B	T	N-øH	Weight(kg)
		Expansion length	Contraction length						
25(1")	680	20	50	100	100	60	4	4-ø12	8.7
32(1¼")	680	20	50	120	100	70	4	4-ø12	10.0
40(1½")	680	20	50	120	100	70	4	4-ø12	11.9
50(2")	680	20	50	130	100	80	5	4-ø15	15.2
65(2½")	780	20	50	140	120	100	5	4-ø15	15.8
80(3")	780	20	50	150	120	110	5	4-ø15	24.3
100(4")	880	20	50	170	120	130	6	4-ø19	37.5