

Steam boiler

Pressure Vessel

YSF-5, 6 Type Safety Valve (Full Bore Type)

02



YSF-5 Type



YSF-6 Type

Features

- Simple structure and outstanding performance.
- Superb performance, followed by strict quality control procedure.
- High impact resistance and good abrasion resistance: The disc and seat are stainless steel welded with satellite.
- Test lever attached: Periodical performance inspections can be conducted.
- Approved by the Korea Occupational Safety and Health Agency (KOSHA).

Specifications

Type	YSF-5	YSF-6
Test lever	Yes	Optional
Applicable fluid	Steam, air	Liquid
Set pressure range	0.1~1.0 MPa	
Fluid temperature	220°C Below	80°C Below
End connection	Inlet	KS PT SCREW
	Outlet	KS PT SCREW
Material	Body	GC200
	Disc, seat	STS304, SCS13
Hydraulic test pressure	SSC 13	

▶ Install a strainer (40 MESH or more) at the front end when installing the valve.

Dimensions

(mm)

Size Inlet x Outlet	Seat diameter	Throat diameter	Throat area(mm ²)	Lift	Face to Face		Height (H)		Connection size	Blow off rate(kg/h)		Weight (kg)	
					L1	L2	YSF-5	YSF-6		OUT	중기	공기	YSF-5
di X do	ds	dt	A	L	L1	L2	YSF-5	YSF-6	OUT	중기	공기	YSF-5	YSF-6
20(3/4")X25(1")	18	15	314.2	3.8	50	74	182	180	1"	277	2214	33	3.2
25(1")X32(1 1/4")	22	19	490.9	5.0	60	85	215	212	1 1/4"	432	3460	5.2	4.85
40(1 1/2")X50(2")	35	30	1256.6	7.5	80	100	295	293	2"	1107	8857	9.6	9.2
50(2")X65(2 1/2")	45	38	1963.5	9.5	90	115	335	332	2 1/2"	1729	13810	16.0	16.0

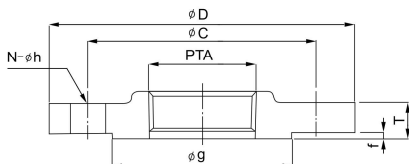
>> Dimensions (KS B 6216 10K RF Flange)

(mm)

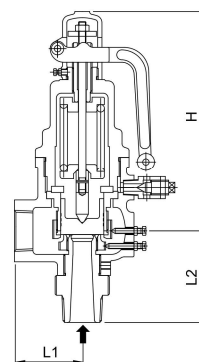
Classification	PTA	ø D	ø C	ø g	N-ø h	f	T
Size							
20(3/4")	1"	125	90	67	4-19	1	18
25(1")	1 1/4"	135	100	76	4-19	2	20
40(1 1/2")	2"	155	120	96	8-19	2	20
50(2")	2 1/2"	175	140	116	8-19	2	22

For reference

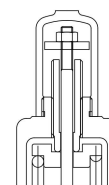
- In order to install the type YSF-5, 6 as a flange, a coupling flange is required by made-to-order.



Dimensional drawing



YSF-5 Type



YSF-6 Type