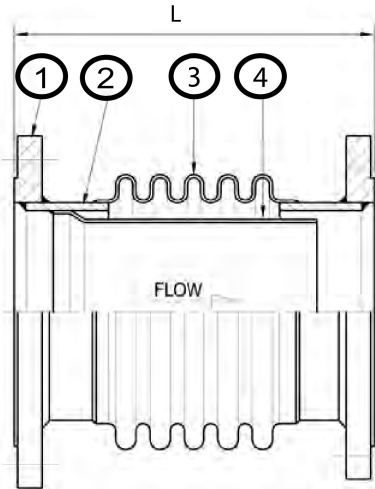
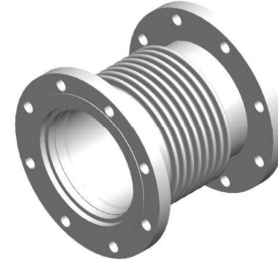


SJT1100

STAINLESS STEEL EXPANSION JOINT



Item	Qty	Name	Standard Material
1	2	Flange	SS400
2	2	Short Pipe	CS
3	1	Bellows	SUS316L
4	1	Internal Sleeve	SUS316L

SJT-1101,1103,1105 10 bars (150 PSI)
 SJT-1102,1104 20 bars (300 PSI)
 SJT1106 16 bars (232 PSI)
 SJT1107 25 bars (360 PSI)

Design Working Pressure	10-25 Bar (150-360 PSI)
Design Working Temperature	250 ^o C
Applicable Fluid	Water, Hot Water, Oil, Steam, Gas, and Exhaust Air

- Please consult us for other material, temperature and movement designs
- Shipping devices (yellow sticker) must be removed prior to start-up or testing the system.

Size	Axial Movement (mm)	Axial Spring Rate (N/mm)	Effective Area (cm ²)	SJT-1100		SJT-1100-BB		L(mm) of SJT-1100 Other Type			
				L (mm)	Weight (kg)	L (mm)	Weight (kg)	VS	NP	FL	LL
40A	25	68	25	250	4	250	1	150	145	245	245
50A	25	79	36	250	5	250	1	150	150	250	250
65A	35	87	51	250	8	250	2	200	200	260	265
80A	35	90	79	250	10	250	2	200	200	260	250
100A	35	105	131	275	14	275	4	220	200	280	285
125A	35	101	198	275	17	275	5	220	200	280	280
150A	35	136	265	300	21	300	7	220	200	305	305
200A	35	166	440	300	32	300	9	250	230	305	305
250A	35	169	679	350	43	350	13	300	270	355	355
300A	35	217	943	350	65	350	18	300	290	365	365
350A	35	225	1125	350	84	350	22	300	290	375	375
400A	35	337	1469	350	106	350	26	300	290	375	375
450A	35	344	1844	375	123	375	36	300	290	405	405
500A	35	377	2252	375	153	375	42	300	290	405	405
600A	35	602	3215	375	216	375	62	300	290	420	420