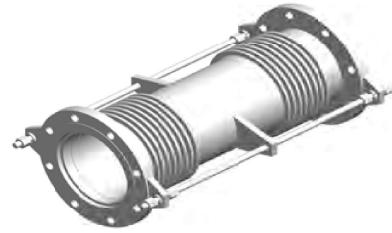
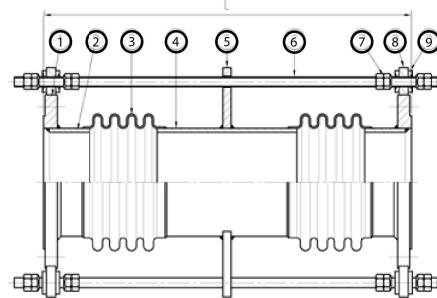


SJT 7200

UNIVERSAL TYPE DOUBLE EXPANSION JOINT WITH LIMIT RODS
 Classical type of double bellows construction, for large amount of axial and lateral movement.



Structure



Feature

Absorption for large amount of thermal expansion:
 Double Bellows Expansion Joints are employed in piping systems to absorb large amount of differential thermal expansion while and lateral displacement containing the system pressure.

Maximize the productivity:
 Standard design of movement and material maximizes the productivity while the custom design maximizes the suitability for special applications.

Reliability:
 Computer designed bellows element complies with EJMA criteria.

Quality:
 All products are tested before delivery according to relevant code or ISO quality control system.

| Item | Qty | Name | Standard Material |
|------|-----|-----------------------|-------------------|
| 1 | 2 | Flange | SS400 |
| 2 | 2 | Short Pipe | CS |
| 3 | 2 | Bellows | SUS316L |
| 4 | 1 | Middle Pipe | CS |
| 5 | - | Middle Holder | SS400 |
| 6 | - | Limit Rods | SS400 |
| 7 | - | Spherical Nut and Nut | SS400 |
| 8 | - | Thick Holder | SS400 |
| 9 | - | Conical Seat | SS400 |

| | |
|-----------------------------------|--|
| Design Working Pressure | 1.02 MPA (10 Kg/cm ²) |
| Design Working Temperature | 250°C |
| Applicable Fluid | Water, Hot Water, Oil, Steam, Gas, and Exhaust Air |
| Axial Movement | 25 mm |
| Lateral Movement | 25 mm |

| Size | Spring Rate (N/mm) | | Effective Area (cm ²) | SJT-7200 | | SJT-7200-BB | |
|------|--------------------|---------|-----------------------------------|----------|-------------|-------------|-------------|
| | Axial | Lateral | | L (mm) | Weight (kg) | L (mm) | Weight (kg) |
| 40A | 83 | 2 | 25 | 500 | 7 | 500 | 4 |
| 50A | 95 | 3 | 36 | 500 | 9 | 500 | 5 |
| 65A | 94 | 4 | 51 | 500 | 13 | 500 | 6 |
| 80A | 89 | 5 | 79 | 500 | 17 | 500 | 8 |
| 100A | 116 | 9 | 128 | 550 | 25 | 550 | 14 |
| 125A | 122 | 16 | 187 | 550 | 29 | 550 | 18 |
| 150A | 124 | 21 | 262 | 550 | 36 | 550 | 23 |
| 200A | 124 | 27 | 441 | 600 | 58 | 600 | 36 |
| 250A | 125 | 45 | 665 | 600 | 81 | 600 | 51 |
| 300A | 144 | 83 | 948 | 600 | 109 | 600 | 62 |
| 350A | 145 | 99 | 1133 | 600 | 138 | 600 | 76 |
| 400A | 138 | 137 | 1452 | 600 | 170 | 600 | 90 |
| 450A | 147 | 156 | 1822 | 650 | 204 | 650 | 117 |
| 500A | 182 | 248 | 2290 | 650 | 270 | 650 | 159 |
| 600A | 221 | 316 | 3230 | 700 | 373 | 700 | 219 |

Installation Guide

Nuts are fixed by welding for allowable movement setting
 Shipping devices (painted yellow) must be removed prior to start-up or testing the system.
 Please consult us for other material, pressure, temperature and movement designs.
 Please read the instruction xxxxx before designing and installation.